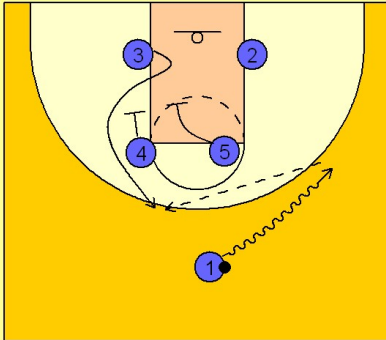


Oklahoma

Set play (13)

1

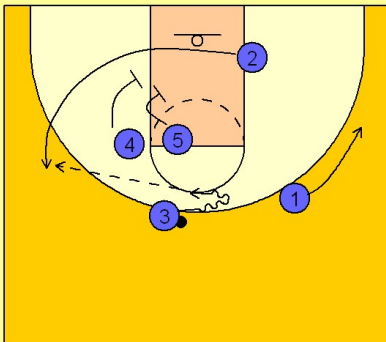
Oklahoma Set Play vs. Man Defense



#1 takes the ball on the dribble to the right wing area. As he is doing this, #4 and #5 set up for a double screen away. #3 uses the double screen to get open near the top of the key for the pass from #1 and the potential shot.

2

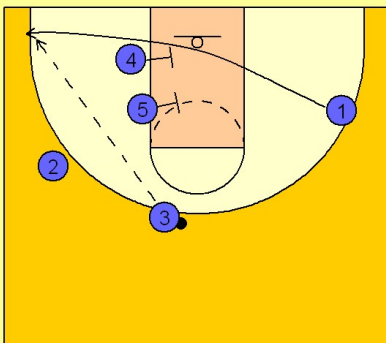
Oklahoma Set Play vs. Man Defense



If #3 does not have a shot, #4 and #5 will then double screen for #2. #3 will pass to #2 if he is open for the shot. #1 cuts away after passing to #3 as he will be the next man in the double screen rotation.

3

Oklahoma Set Play vs. Man Defense



Even if #2 does not get the ball, #4 and #5 screen for #1 cutting out to the left corner area for the shot. The pass could come from #2 or #3 depending upon if #2 did receive the ball off of his double screen.