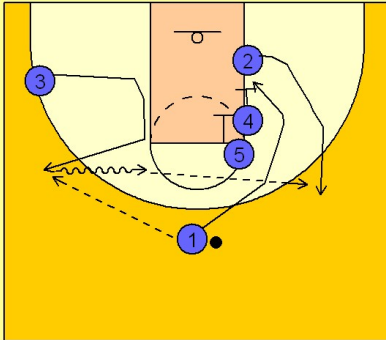


Oklahoma Set play (14)

1

Oklahoma Set Play vs. Man Defense

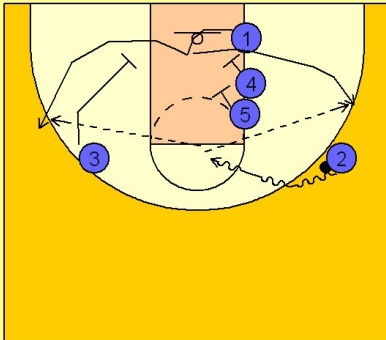


#1 enters to #3 who has cut into the left lane line and then out to receive the pass from #1 on the left wing. After passing, #1 cuts down to the low block area away from the ball.

#3 drives the ball towards the middle while #4 and #5 down screen for #2. #3 looks to hit #2 for the open jumper coming out to the right wing.

2

Oklahoma Set Play vs. Man Defense



If #2 does not have a shot, he will take the ball on the dribble towards the middle while #1 cuts into the lane and uses either the single screen on the left side from #3 or the double screen from #4 and #5 on the right side. #2 will look to score or hit #1 coming off the screens.