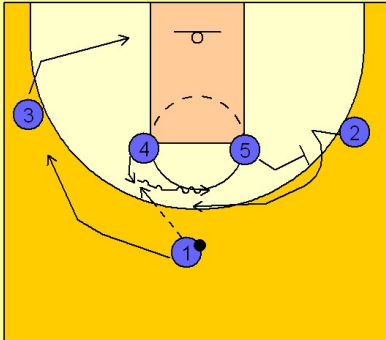


# Oklahoma

## Set play (15)

1

### Oklahoma Set Play vs. Man Defense



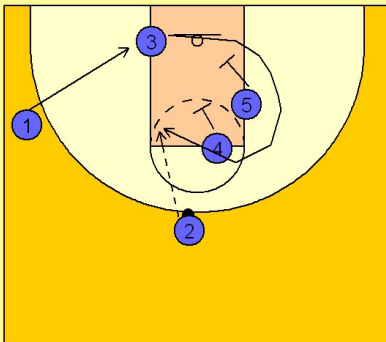
1 - 4 high to begin.

#4 steps out and receives the entry pass from #1. #3 cuts down to the ball side low block. #1 cuts over to the left wing to replace the spot #3 just vacated.

Once #4 has the ball he turns to dribble across the top towards #2 who is coming off a screen by #5. #4 executes a dribble hand off with #2 on top.

2

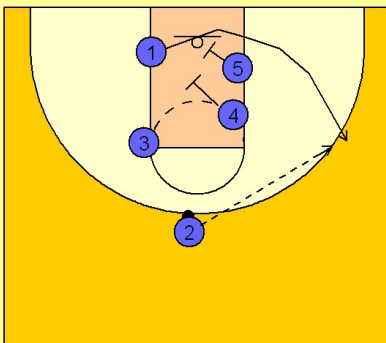
### Oklahoma Set Play vs. Man Defense



Once #2 has the ball on top, #4 and #5 start the familiar double screen rotation screening by setting a pick for #3. #3 curls around the screen looking for the pass from #2. #1 cuts down to become the next man in the wheel rotation.

3

### Oklahoma Set Play vs. Man Defense

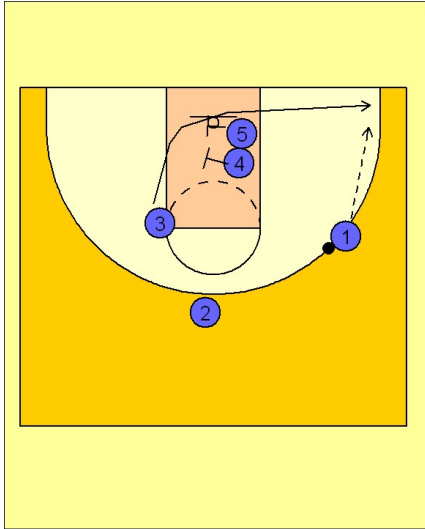


If #3 is not open or if he does not have a shot, #4 and #5 double screen for #1. As a reminder, if #3 did receive the pass but did not shoot, #2 would then cut down and become the next man in the rotation as #1 came off the double as mentioned above.

# Oklahoma Set play (15)

4

Oklahoma Set Play vs. Man Defense



If #1 does not have a shot, #3 now becomes the next man in the wheel and gets the last double screen from #4 and #5 trying to get an open shot in the ball side corner area.