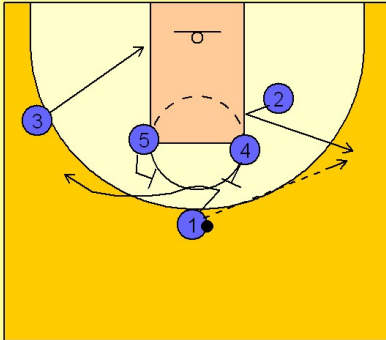


# Oklahoma Set play (16)

1

## Oklahoma Set Play vs. Man Defense

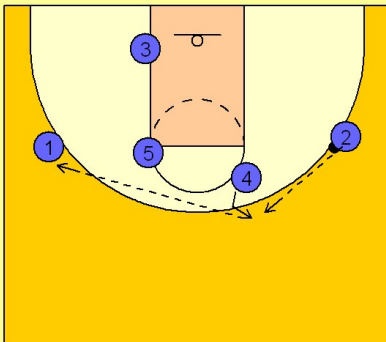


#1 enters the ball to the right side of the floor to #2 who has taken his man and broken out to the right wing to receive the pass from #1.

#1 fakes like he is going to use a back screen from #4 and then uses a back screen from #5 and flares to the back side of the floor. #3 cuts down to the block on the left side of the floor away from the ball.

2

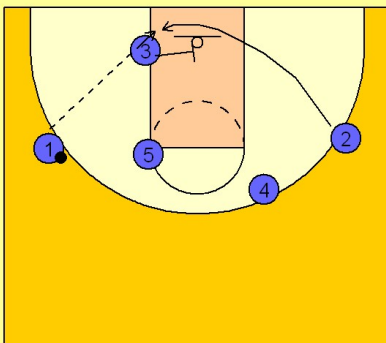
## Oklahoma Set Play vs. Man Defense



Once #2 receives the ball, #4 steps out to receive the next pass from #2. #4 then reverses the ball to #1 on the left wing.

3

## Oklahoma Set Play vs. Man Defense



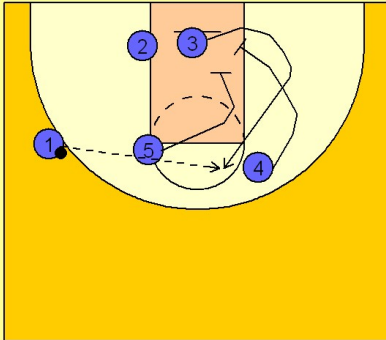
Once #1 has the ball #3 moves into the lane and screens for #2 who cuts across from the other side of the floor. #1 hits #2 inside if he is open.

# Oklahoma

## Set play (16)

4

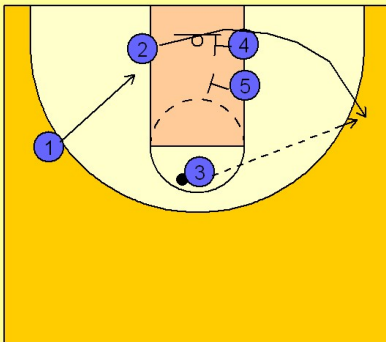
Oklahoma Set Play vs. Man Defense



If #2 is not open #1 will then look for #3 coming up to the top off the double screen from #4 and #5.

5

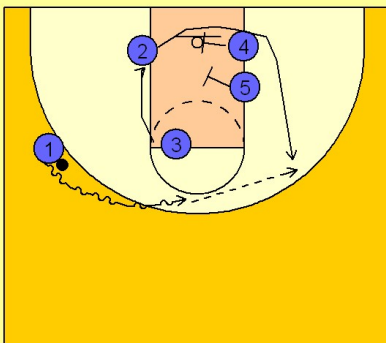
Oklahoma Set Play vs. Man Defense



If #3 receives the ball we begin again the familiar wheel action with continuous double screens. #2 comes off the double from #4 and #5 while #1 moves down into the rotation.

6

Oklahoma Set Play vs. Man Defense

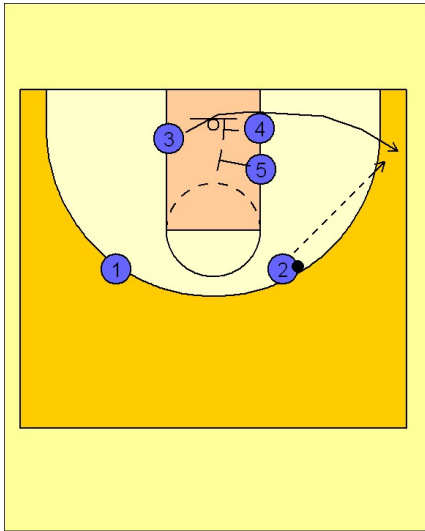


If #3 did not get the ball he would curl into the middle while #2 would then take the next double screen from #4 and #5. #1 now takes the ball on the dribble towards the middle.

# Oklahoma Set play (16)

7

Oklahoma Set Play vs. Man Defense



If #2 does receive the pass the next person receives usually the last double screen out to the corner, this being #3 in the diagram. Again, if #2 did not get the ball he would curl around and let the next man, #3, use the double screen wheel action.