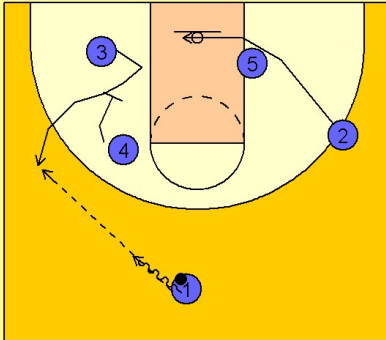


Oklahoma Set play (17)

1

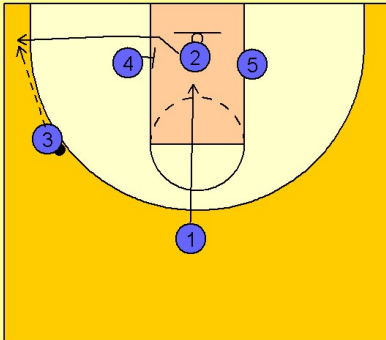
Oklahoma Set Play vs. Man Defense



#4 downscreens for #3. #1 enters the ball to #3 on the left wing. #2 cuts down into the middle of the lane underneath the basket.

2

Oklahoma Set Play vs. Man Defense

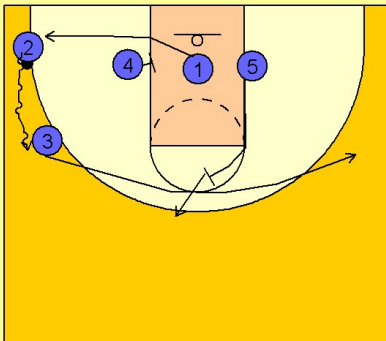


#1 passes to #3 on the left wing and starts to cut down into the lane.

Once #3 has the ball, #2 is cutting to the ballside corner off a screen on the block from #4 and receives the pass from #3.

3

Oklahoma Set Play vs. Man Defense



Once #2 receives the ball in the corner and does not have a shot, he will dribble up the wing while #3 cuts across the court and uses a backscreen from #5.

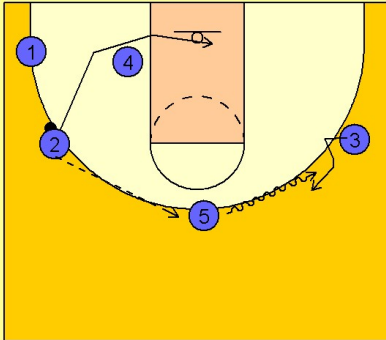
At the same time, #1 is now cutting to the corner looking to get open for a shot on the ballside corner.

#5 backscreens and pops out on top.

Oklahoma Set play (17)

4

Oklahoma Set Play vs. Man Defense

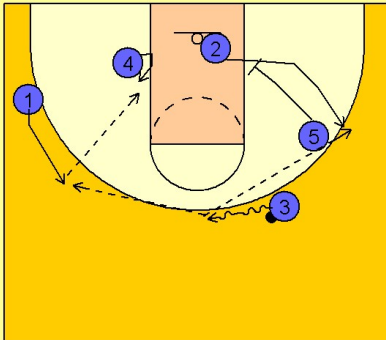


#2 reverses the ball to #5 on top and then cuts through the lane underneath the basket.

Once #5 has the ball he executes a dribble handoff with #3 on the right wing.

5

Oklahoma Set Play vs. Man Defense



#3 will look to score off the dribble handoff.

If the scoring option for #3 is not available, he will center the ball while #5 downscreens for #2.

#3 will look to hit #2 in the right wing for the open jumper or will reverse the ball to #1 on the left wing and will look to feed #4 on the block.