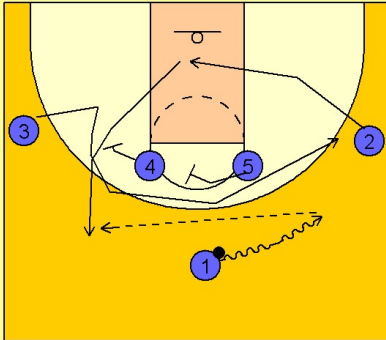


Oklahoma Set play (18)

1

Oklahoma Set Play vs. Man Defense



1 - 4 high to begin.

#1 drives the ball to the right wing.

#2 clears out underneath the basket while #3 curls around a double staggered screen from #4 and #5 around the freethrow line area.

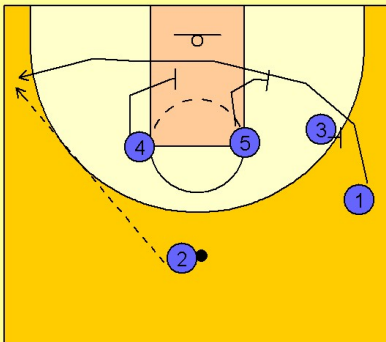
If #3 is open he will receive the ball for the shot.

Usually, the offense will continue with #2 coming up from the middle off of a screen from #4.

#1 will pass the ball to #2 on the top left area.

2

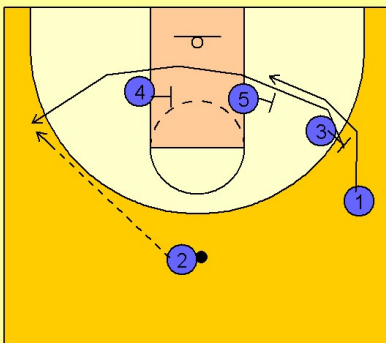
Oklahoma Set Play vs. Man Defense



Once #2 receives the ball on top, #1 will use a triple staggered screen from #3, #5 and #4 to get open on the opposite wing area for the shot.

3

Oklahoma Set Play vs. Man Defense

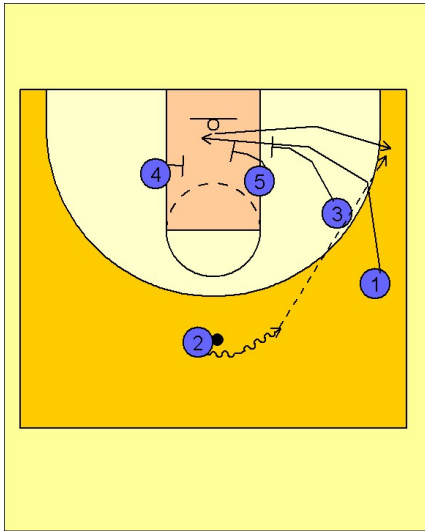


Another option on this play is for #1 to start to make the cut across the lane, stop at the lane line area while #3 turns around after screening and now uses the screen from #5 and #4 to get open on the opposite wing.

Oklahoma Set play (18)

4

Oklahoma Set Play vs. Man Defense



Another option is for #1 to cut into the lane as if to cut all the way across to the opposite wing for the shot, but now stops, turns around and cuts back out to the right corner area off of a screen from #5 and #3.