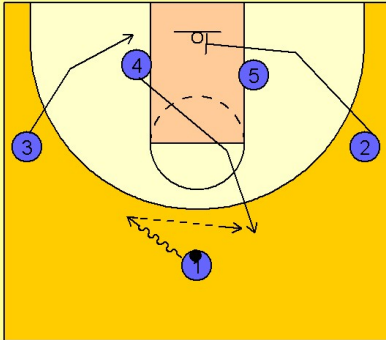


Oklahoma Set play (19)

1

Oklahoma Set Play vs. Man Defense



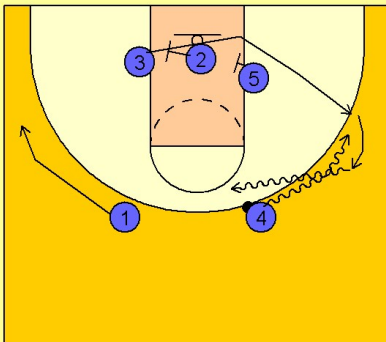
#1 takes the ball to the top left area of the court while #4 breaks out to the top opposite the ball.

#3 moves down to his low block area while #2 moves into the lane and prepares to screen underneath the basket.

#1 passes the ball to #4 on top.

2

Oklahoma Set Play vs. Man Defense



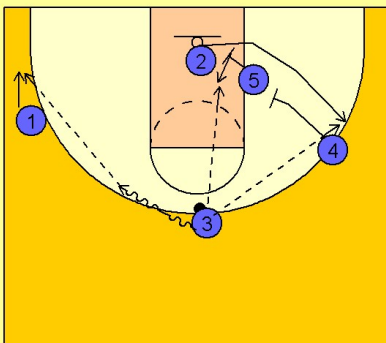
Once #4 receives the pass he begins to take the ball on the dribble to the right wing area.

#2 and #5 set a double staggered screen for #3 while #4 executes a dribble handoff with #3 coming up to the wing.

#3 takes the ball towards the middle of the floor once receiving the dribble handoff.

3

Oklahoma Set Play vs. Man Defense



Once #4 handed the ball to #3, #5 and #4 will set a double staggered screen for #2.

#2 will look to get open on the right wing. #3 can hit #2 if he is open on the right wing or can look to penetrate in the gap after receiving the dribble handoff from #4 and look to score or drive and kick out to #1 on the left wing.

#5 will shape up in the post after screening for #2, looking for the potential post entry pass from #3 on top.