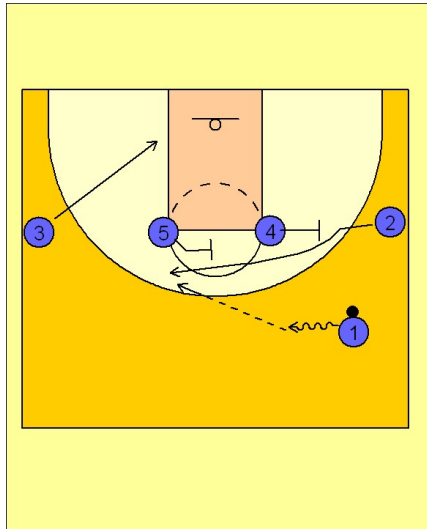


# Oklahoma

## Set play (8)

1



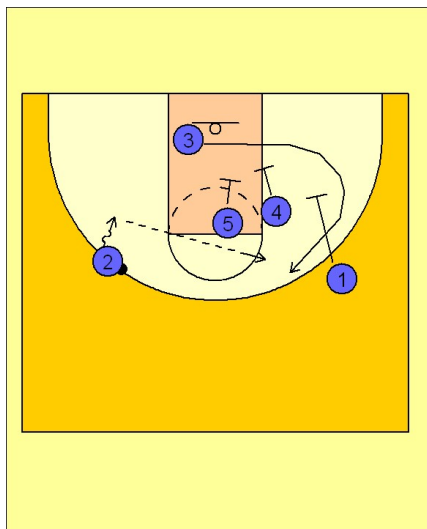
Oklahoma Set Play

1 - 4 across alignment to start.

(#4) and (#5) screen for (#2) coming to the top of the key area for the entry pass from (#1).

(#3) clears down to the block area.

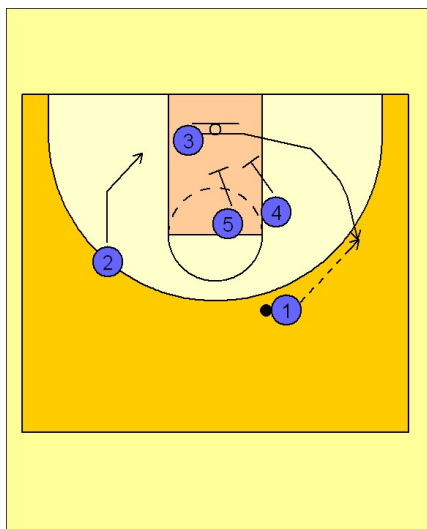
2



Oklahoma Set Play

If (#1) receives the ball, he has the option to drive to the basket or look for (#3) coming off the double screen and single screen from (#5), (#4) and (#1).

3



Oklahoma Set Play

If (#2) was not open, (#1) now looks for (#3) coming off the double screen from (#4) and (#5).

(#2) now moves down to the block.

# Oklahoma

## Set play (8)

4

## Oklahoma Set Play

Whether or not (#3) gets the pass, (#4) and (#5) continue to double screen across for (#2) breaking to the corner.

