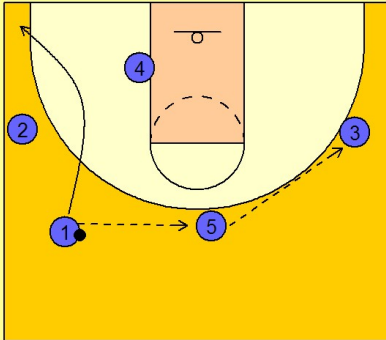


Oklahoma state

Early offense (1)

1

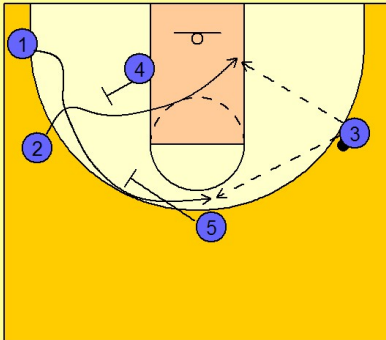
Oklahoma State Early Offense



#1 brings the ball up on the side and then reverses the ball to #5 on top who swings it to #3 on the right wing. #1 passes and cuts through to the opposite corner area.

2

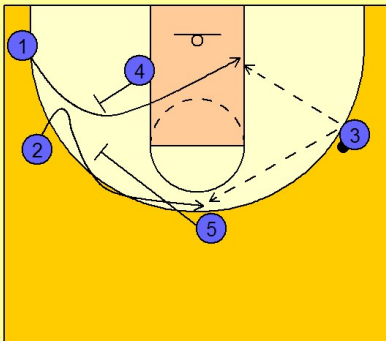
Oklahoma State Early Offense



#4 steps out and back screens for #2. #2 cuts through the lane first then #1 follows behind him coming up high off the down screen from #5. #3 hits #2 for the layup if he is open, if not, he passes the ball on top to #1.

3

Oklahoma State Early Offense



As an option, #2 can fake cutting through and come up high off of #5's down screen while #1 then takes the back screen from #4 and cuts through the lane. #2 determines what option to use by making his decision first to cut through off the back screen from #4 or come up high off the down screen from #5.

Oklahoma state

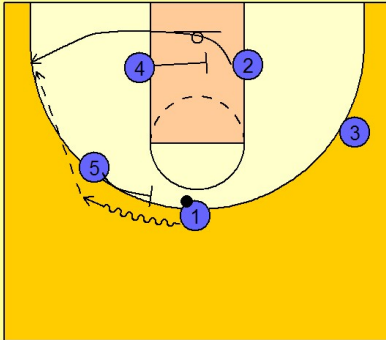
Early offense (1)

4

Oklahoma State Early Offense

We will assume the person cutting to the basket was not open and we reversed the ball on top to #1.

#1 now gets a ball screen from #5 while #4 moves into the lane to set a screen for #2 popping out to the corner area. #1 looks to hit #2 for the open wing / corner jumper.



5

Oklahoma State Early Offense

If that is not there, #1 reverses the ball on top to #5 who looks inside first to #4 pinning and sealing inside. If #4 is not open, he will pass it to #3 who will also look to feed the post. They will run their motion offense from here or call a quick hitting "shot clock" play (which for most teams is a screen and roll on top for the point guard).

