

Oklahoma state

Early offense (2)

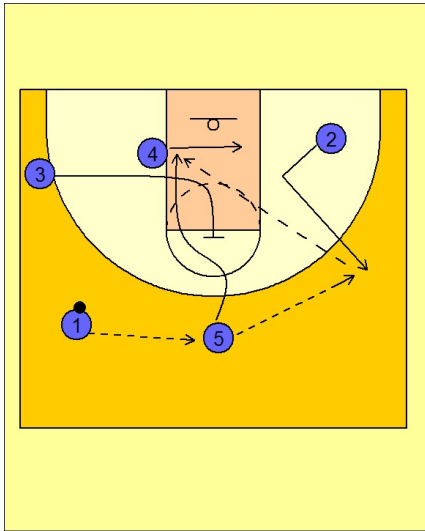
1

Oklahoma State Early Offense

This is the standard North Carolina early offense.

#1 takes the ball up the sideline and reverses the ball to #5 on top. #5 swings it to #2 on the right wing. #4 follows the ball across the lane while #3 moves into the middle of the lane and sets a back screen for #5 around the FT line.

#2 looks for #5 going to the basket.



2

Oklahoma State Early Offense

Teams will use one of two options here. Either #3 will pop out to the top and the team will get into their half court offense, or, they will do what Oklahoma State does here.

#4 screens for #3 breaking out to the ball side corner area for a jumper. If that is not there, OSU will set up in their half court offense or call a set play.

