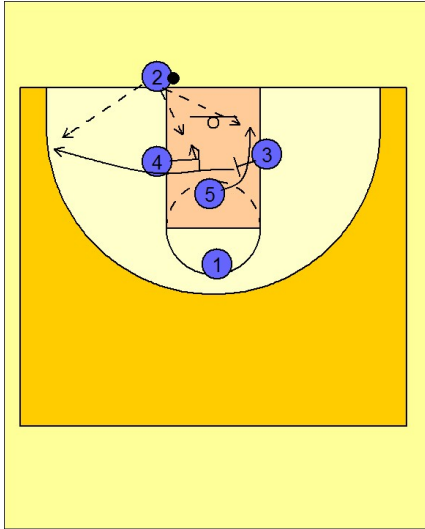


Oklahoma state

Ob under vs. man (1)

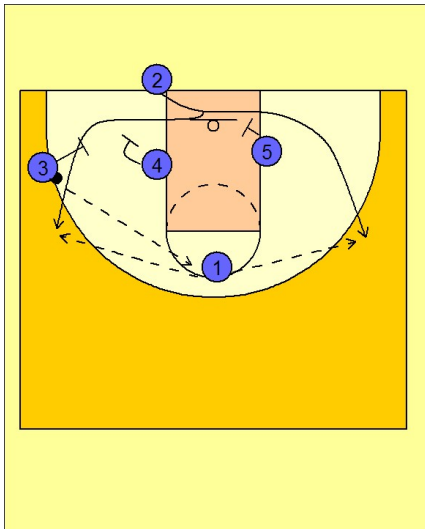
1



Oklahoma State OB Under vs. Man Defense

The play starts with #3 screening for #5 who cuts around the screen looking for the quick hitting entry pass from #2. #4 then screens the screener, #3, and #3 breaks out to the ball side corner area. #2's second option is to hit #3 in the corner.

2



Oklahoma State OB Under vs. Man Defense

Once #3 has it he reverses the ball on top to #1. #2 then steps in and can use the single screen on the right side from #5 or he can use the double staggered screen from #4 and #3 on the left side.