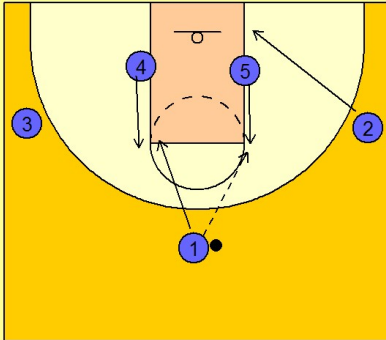


Oklahoma state

Quick hitter (4)

1

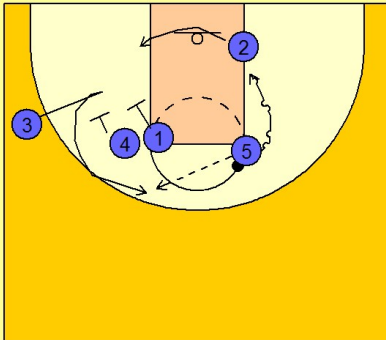
Oklahoma State Set Play vs. Man Defense



! - 4 high to begin with #4 and #5 flashing to the elbows. #1 enters the ball to #5. #2 cuts down to the low block area on the right side. #1, after passing to #5, cuts in the high post elbow area next to #4.

2

Oklahoma State Set Play vs. Man Defense



#1 and #4 set a double screen for #3 while #2 clears out. #5 can hit #3 coming off the double or he can turn and take the ball to the basket that has just been cleared out by #2.