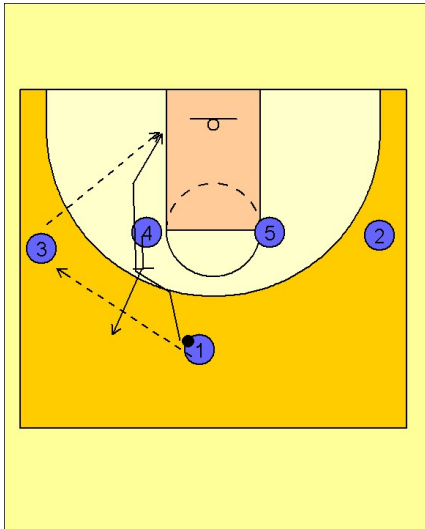


Oklahoma state

Set play (10)

1



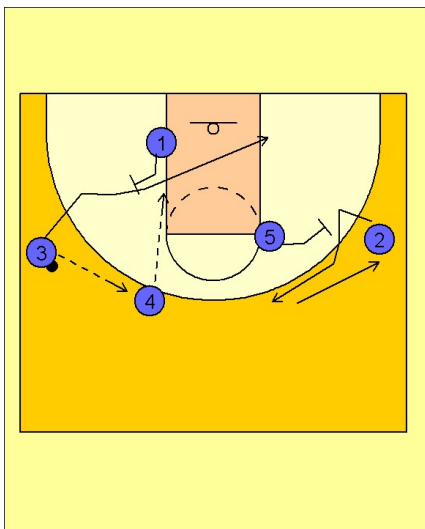
Oklahoma State Set Play vs. Man Defense

1 - 4 high to begin.

#1 enters the ball to the left wing player #3. #1 receives a back screen from #4 and cuts to the left low block. If #1 is open, #3 can make the pass.

#4 steps out after back screening for #1.

2



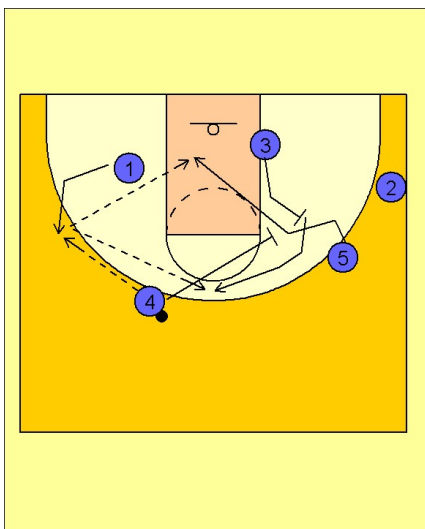
Oklahoma State Set Play vs. Man Defense

#3 passes to #4 and then cuts through the lane off of a back screen from #1.

If #3 is open, #4 will make the pass to the cutting #3.

At the same time this action is going on, #5 and #2 are occupying their defenders by screening for each other.

3



Oklahoma State Set Play vs. Man Defense

If #3 does not receive the pass, #4 passes to #1 breaking out to the left wing after back screening for #3.

On the pass, #3 is stepping out and setting a diagonal back screen for #5 who cuts to the left low block.

#4 then screens the screener, setting a pick on #3 who pops to the top of the key area for the open jump shot.