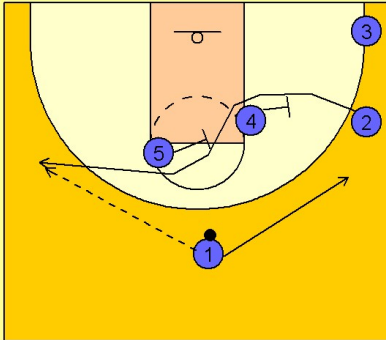


Oklahoma state

Set play (11)

1

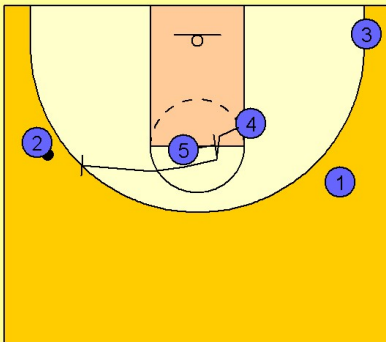
Oklahoma State Set Play vs. Man Defense



#5 and #4 start the play by screening for #2 to get open on the left wing area. #1 enters the ball to #2 and cuts away to the opposite wing area.

2

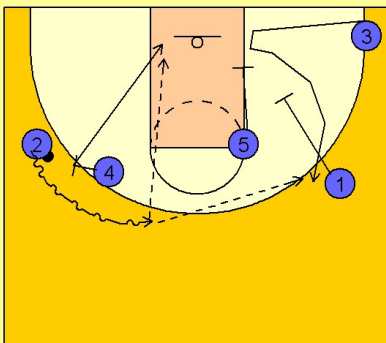
Oklahoma State Set Play vs. Man Defense



Once #2 has the ball, #5 continues his movement to the right by screening for #4. #4 breaks over the screen and moves toward #2 on the left wing, ready to execute the pick and roll.

3

Oklahoma State Set Play vs. Man Defense



As #2 comes off the screen from #4, #5 and #1 are setting a double staggered screen for #3 breaking out to the top looking for the open shot.

#4 rolls to the basket as #2 comes over the top of the ball screen.