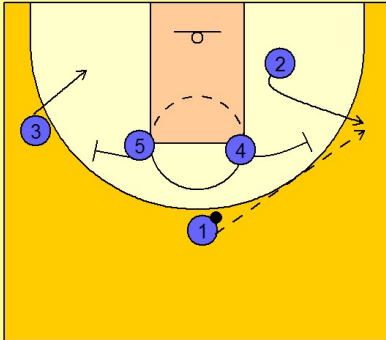


# Oklahoma state

## Set play (2)

1

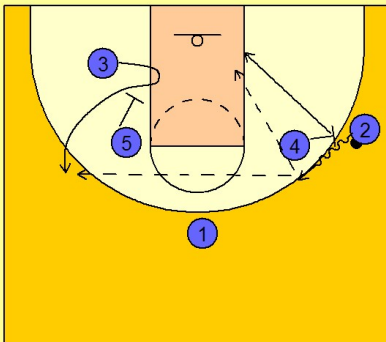
Oklahoma State Set Play vs. Man Defense



#2 cuts out to the right wing. #4 moves out to get in position for a screen. #3 moves down to the low block area while #5 gets in position to set a screen. #1 passes to #2 on the right wing.

2

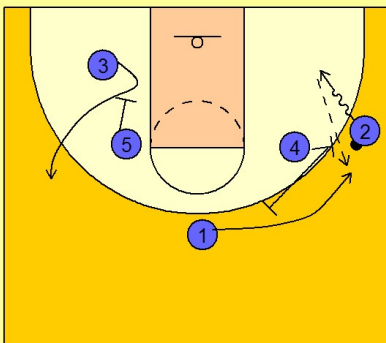
Oklahoma State Set Play vs. Man Defense



#4 ball screens for #2 while #5 is down screening for #3. If #2 comes off the ball screen high he will look for #3 coming off the down screen on the back side or he will look for #4 rolling to the basket.

3

Oklahoma State Set Play vs. Man Defense



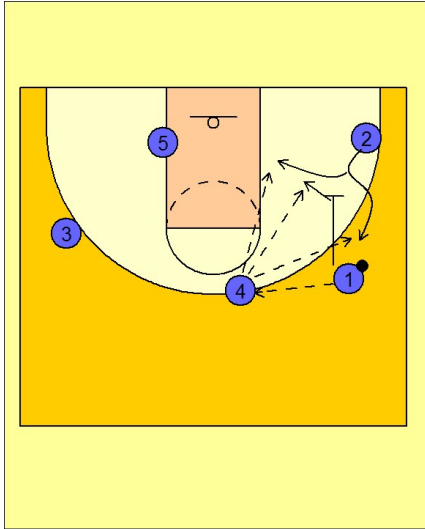
If he decides to cut low off the ball screen, #4 will turn and screen away for #1 on top. If #2 cannot score going right he will look to pass the ball back to #1 coming off of #4's screen.

# Oklahoma state

## Set play (2)

4

### Oklahoma State Set Play vs. Man Defense



Once #1 gets the ball he passes to #4 on top. After passing to #4, #1 down screens for #2 in the right corner. #2 can fake low and come off high over the screen or he can fake high and cut low towards the basket. If #2 comes up high off the screen, #1 can cut to the basket looking for the pass from #4 if he is open because his man helped on the screening action.