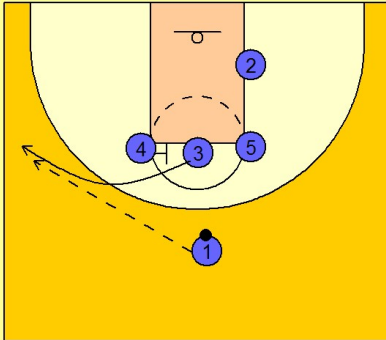


# Oklahoma state Set play (3)

1

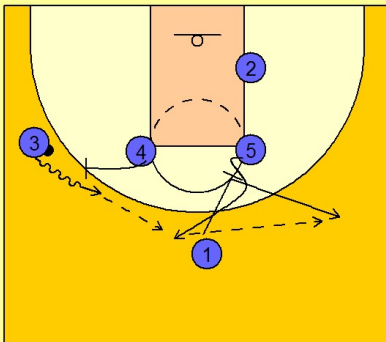
Oklahoma State Set Play vs. Man Defense



#4, #3 and #5 in a line across the free throw line to start. #4 screens for #3 who breaks out to receive the entry pass from #1 on the left wing.

2

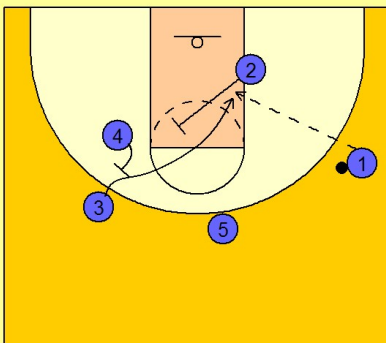
Oklahoma State Set Play vs. Man Defense



Once #3 has the ball, #4 moves out to ball screen for #3. #1 screens down for #5 and then breaks out to the right wing. #3 comes off the ball screen and passes to #5 on top. #5 then passes to #1 on the right wing.

3

Oklahoma State Set Play vs. Man Defense



Once #1 has it, #2 sets a diagonal back screen along with #4 for #3 to cut to the right low block and the layup.