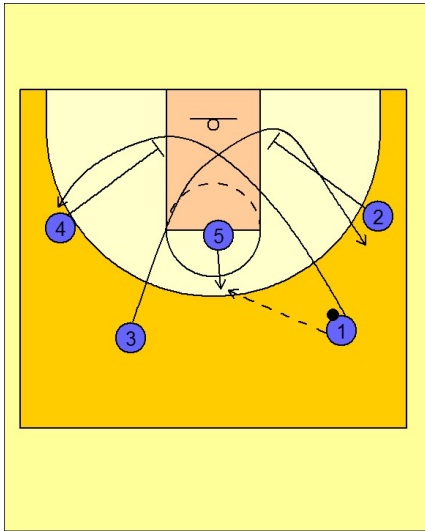


Oklahoma state

Set play (4)

1



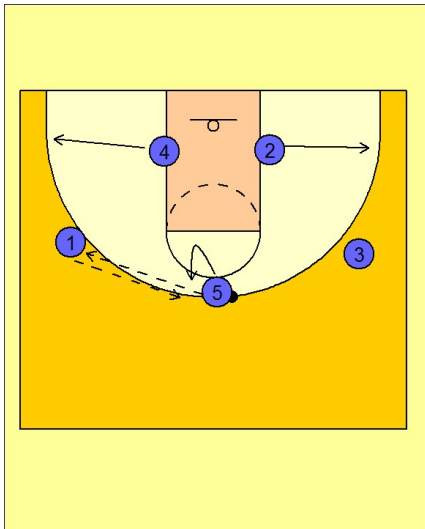
Oklahoma State Set Play vs. Man Defense

2 - 3 high set to begin.

#5 steps out to receive the entry pass from #1.

#2 and #4 move down to the blocks to set up for a down screen. #1 and #3 cut down and cross up off the screens from #2 and #4.

2

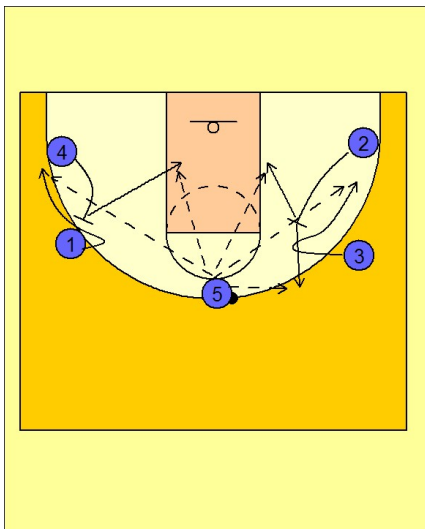


Oklahoma State Set Play vs. Man Defense

#5 passes the ball to #1. #4 and #2 step out to their respective wing / corner areas.

#5 cuts away and then back to receive the ball from #1.

3



Oklahoma State Set Play vs. Man Defense

Once #5 has the ball, #4 and #2 back screen for #1 and #3. #1 and #3 fade to their respective wing areas looking for the skip pass from #5. The screeners, #4 and #2, can either roll to the basket or pop out depending upon how they are defended and their shooting range. #5 has to make the best, quick decision on determining who will have the best shot opportunity.