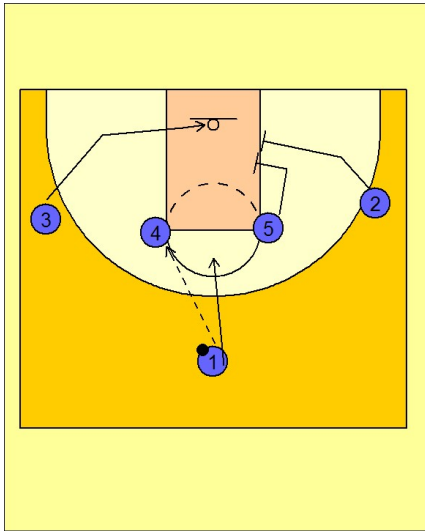


Oklahoma state

Set play (5)

1



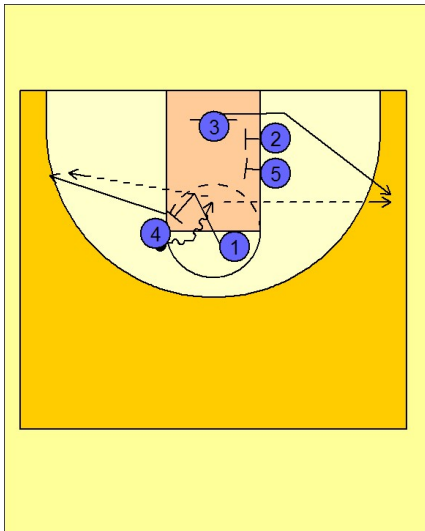
Oklahoma State Set Play vs. Man Defense

1 - 4 high set to begin.

#1 enters to #4 on the left ft line elbow area. #1 cuts to the ft line while #5 and #2 set up for a double screen on the right low block area.

#3 cuts into the middle of the lane.

2



Oklahoma State Set Play vs. Man Defense

As #3 comes off the double screen from #2 and #5, #1 is setting a back screen for #4 as he looks to penetrate over the top of the screen and into the lane. #4 can score himself or look to hit #3 coming off the double or #1 breaking out after screening.