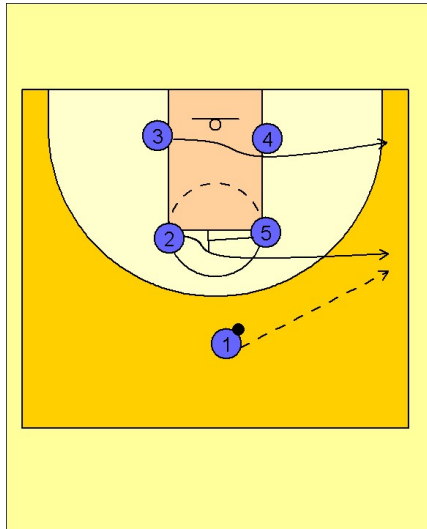


Oklahoma state

Set play (6)

1

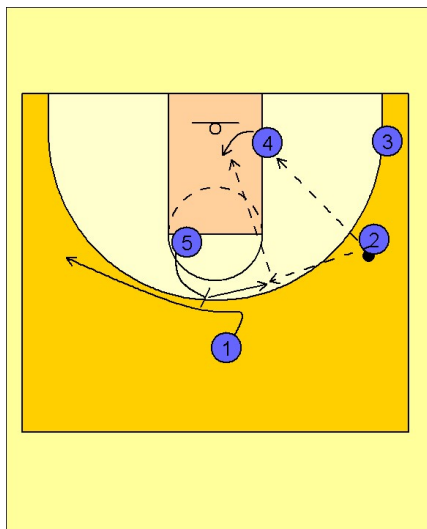


Oklahoma State Set Play vs. Man Defense

Box set to begin.

#5 screens across for #2. #1 enters the ball to #2 on the right wing. At the same time, #3 cuts to the ball side corner area.

2

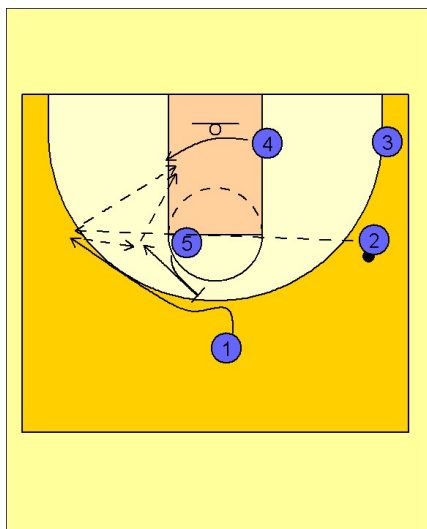


Oklahoma State Set Play vs. Man Defense

As soon as #1 passes to #2 on the right wing, #5 steps out and back screens #1's defender looking to free him for a skip pass on the back side of the floor.

#2 looks inside to #4 or to #5 stepping toward the ball after back screening for #1, looking to make the high / low pass to #4 down low.

3



Oklahoma State Set Play vs. Man Defense

If #2 does make the skip pass to #1 on the left side of the floor, #4 cuts across the lane looking for post position on the left low block. #5 again steps toward the ball after screening looking to receive the pass from #1 and then look to make the high / low entry pass to #4.