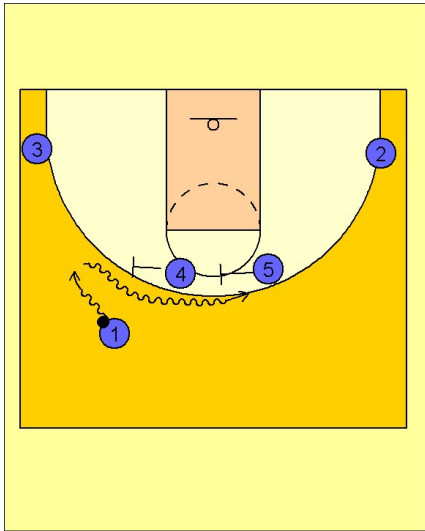


Oklahoma state Set play (7)

1

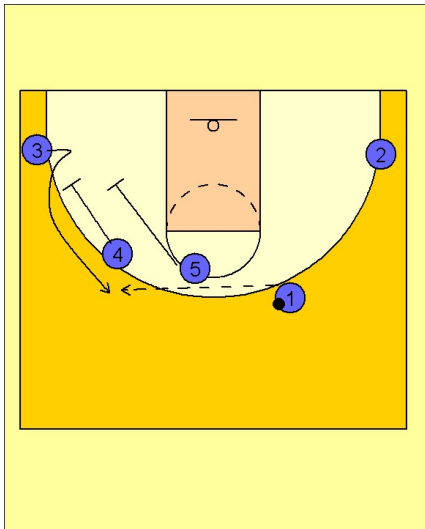


Oklahoma State Set Play vs. Man Defense

#2 and #3 are spread out wide and deep.

#4 and #5 set a double staggered ball screen for #1 across the top of the key area.

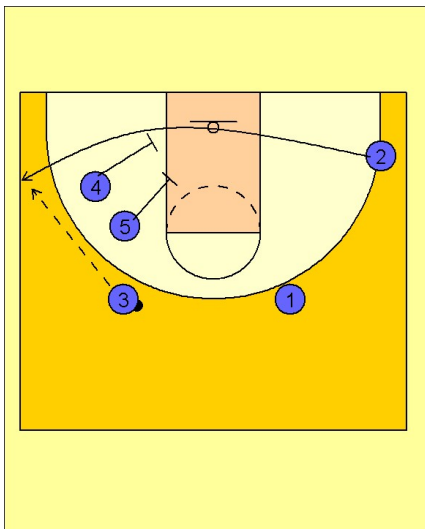
2



Oklahoma State Set Play vs. Man Defense

After #1 gets over the double screen, #4 and #5 double screen away for #3 on the left wing.

3



Oklahoma State Set Play vs. Man Defense

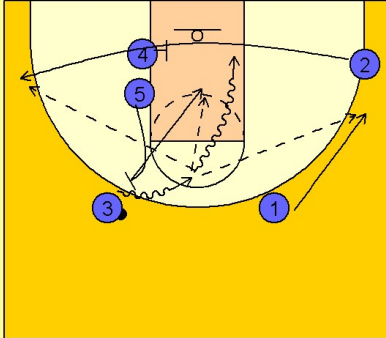
If #3 does not have a shot, #4 and #5 set a double screen on the left low block for #2 cutting out to the left wing / corner area.

Oklahoma state

Set play (7)

4

Oklahoma State Set Play vs. Man Defense



Another option at the end of this play is for #5 to move up out of the double screen and set a ball screen for #3. #2 now uses a single screen to get open on the left wing / corner. #3 can use the ball screen to get into the paint to score, drive and kick out to #1 or look for #5 rolling to the basket.