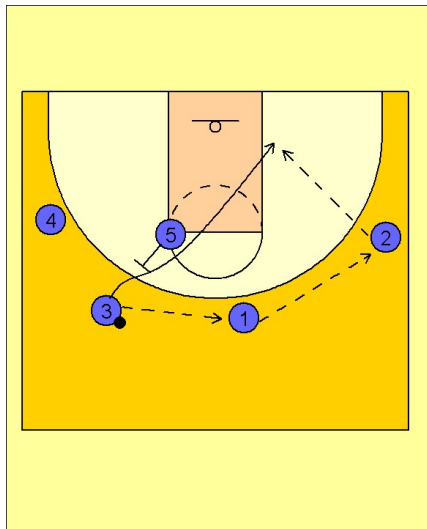


# Oklahoma state Set play (8)

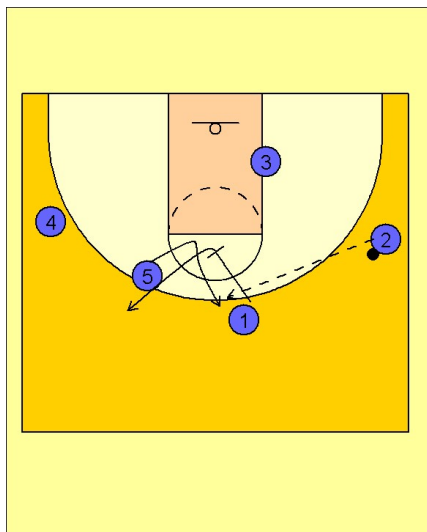
1



Oklahoma State Set Play vs. Man Defense

#3 passes the ball on top to #1 who passes the ball to #2 on the right wing. #5 sets a back screen for #3 who cuts to the ball side low block. #2 looks to make the pass to #3 is he is open.

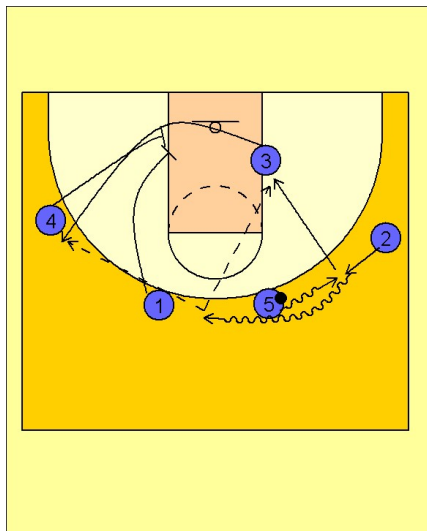
2



Oklahoma State Set Play vs. Man Defense

If #3 does not receive the ball, #1 has screened down for #5 getting him open to receive the ball reversal pass from #2. #1 has popped out after screening for #5.

3



Oklahoma State Set Play vs. Man Defense

#5 now dribbles toward #2 for the dribble hand-off while #4 and #1 are setting up for a double screen on the left low block. As #2 takes the dribble hand-off and takes the ball to the top of the key area, #3 is coming off the double screen and #5 is rolling to the basket. #2 will look to make the pass to either #3 or #5.