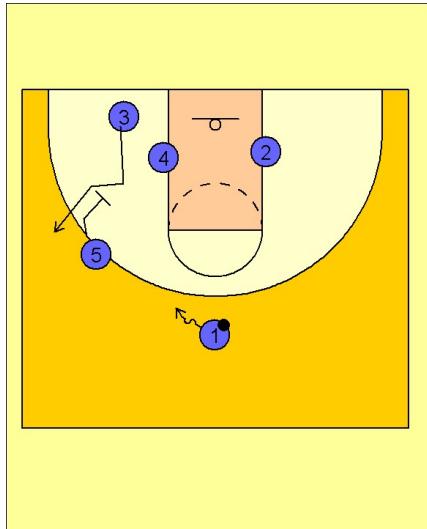


# Oklahoma state

## Set play (9)

1

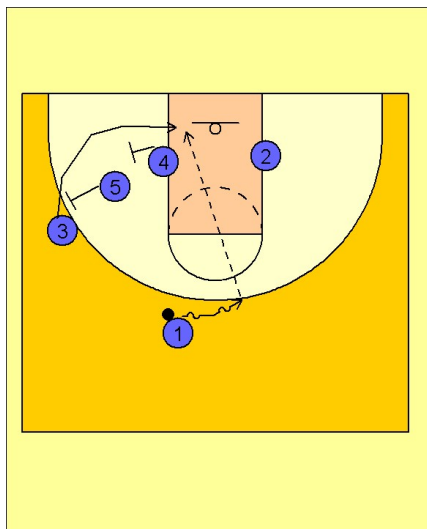


Oklahoma State Set Play vs. Man Defense

#1 starts to take the ball to the left side of the floor. #5 sets a down screen for #3 who pops out to the left wing.

This action will cause the defender to tighten up on #3 on the left wing which will help in the execution of the next set of movements.

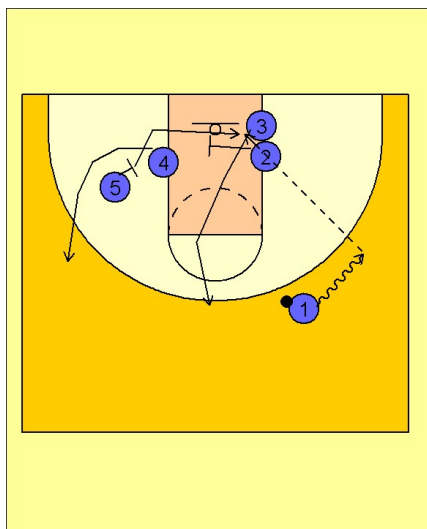
2



Oklahoma State Set Play vs. Man Defense

Once #3 is on the wing, #1 turns his dribble back towards the middle while #5 and #4 set a back screen for #3 cutting underneath the screens looking for a pass in the lane for a layup.

3



Oklahoma State Set Play vs. Man Defense

If #3 does not receive the ball he continues his cut to the right low block with #2.

#1 then continues to dribble to the right wing while #5 sets a down screen for #4 and then cuts into the lane. #4 could also set a back screen for #5 in this play.

#5 receives a screen in the lane from #2 while #3 breaks up to the top of the key area. #1 then looks to feed the post player #5 on the right low block.