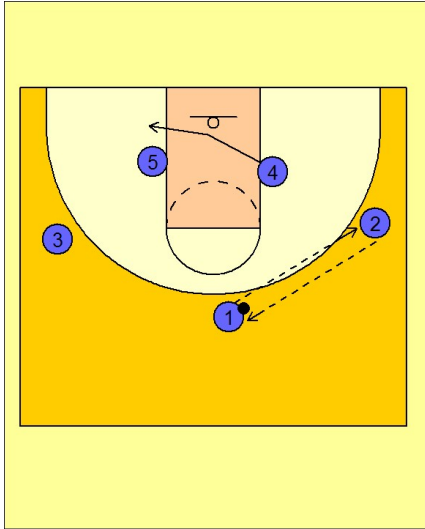


# Oklahoma state

## Set play vs. zone (2)

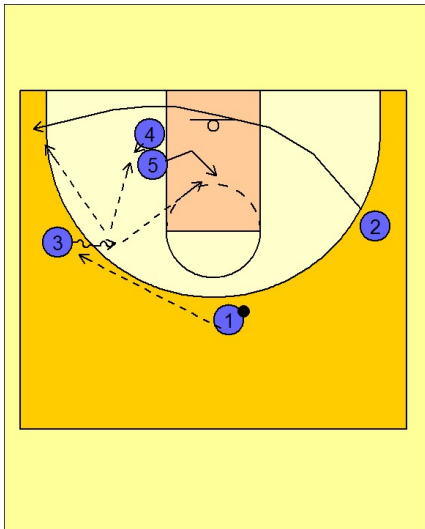
1



Oklahoma State Set Play vs. Zone Defense

#1 passes to #2 on the right wing and receives the pass back from #1. As the ball is passed back to #1 on top, #4 cuts across the lane and stacks up on the left block area with #5.

2



Oklahoma State Set Play vs. Zone Defense

#1 passes to #3 on the left wing while #2 cuts down and out to the ball side corner off the double screen by #4 and #5. As #2 breaks off the screen, #5 steps into the middle while #4 steps in and posts up.

This "quick split" forces the defenders to make decisions on who to guard, usually leaving someone free momentarily.