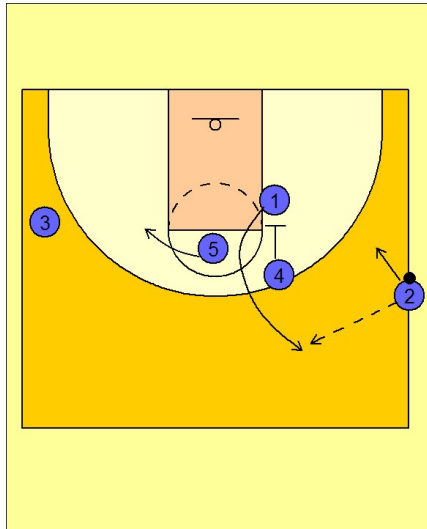


Oklahoma state

Side ob (1)

1

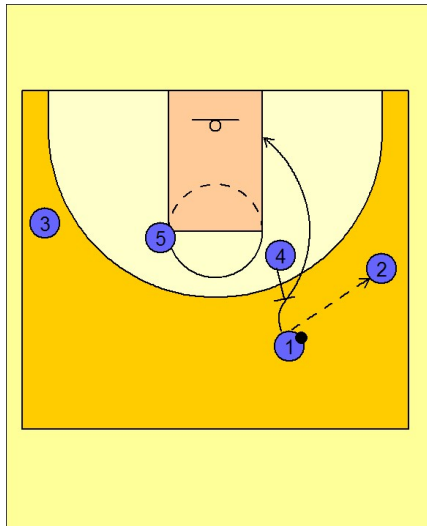


Oklahoma State Side Ob vs. Man Defense

#4 down screens to get #1 open for the entry pass from #2.

After #2 passes to #1, #2 steps inbounds. #5 cuts away to the opposite high post elbow area.

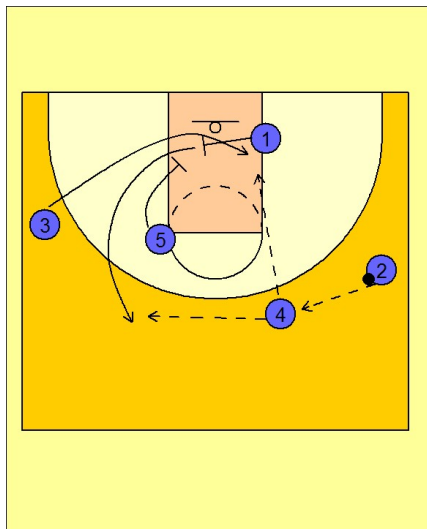
2



Oklahoma State Side Ob vs. Man Defense

#1 passes back to #2. #4 back screens for #1 and #1 cuts down to the low block area.

3



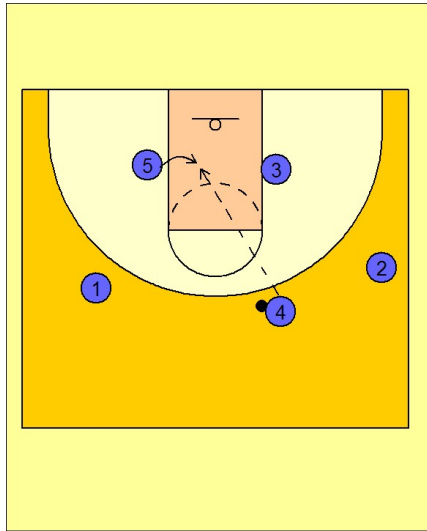
Oklahoma State Side Ob vs. Man Defense

#2 reverses the ball to #4 on top. #1 moves across and sets a screen for #3 who cuts over or under the screen looking for the quick hitting layup and pass from #4. If that is not available, #5 now moves down and "screens the screener", #1, trying to free him on the left side of the floor for an open jumper.

Oklahoma state

Side ob (1)

4



Oklahoma State Side Ob vs. Man Defense

If #1 is not open, #5 ducks in hard after down screening for #1.