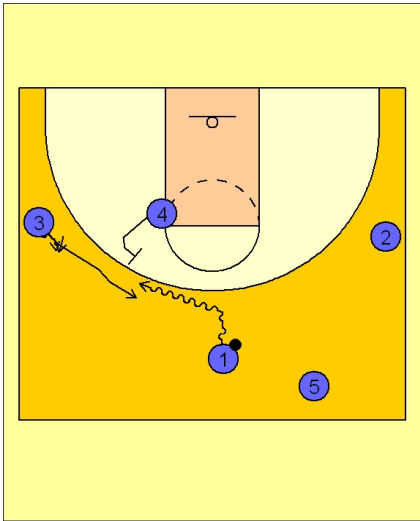




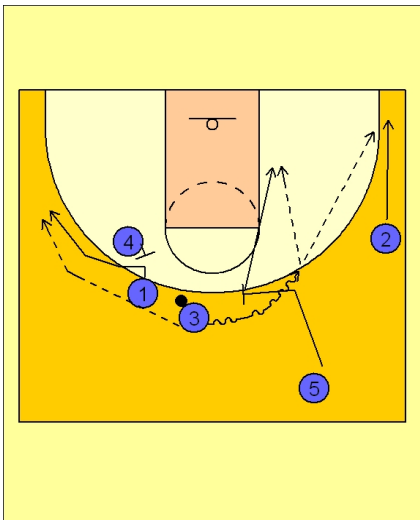
### Early offense (1)



#### Pittsburgh Early Offense

#1 turns his dribble towards the wing player #3. #3 moves up to receive the handoff from #1 near the top of the floor.

#4 moves up to set a back screen for #1.



#### Pittsburgh Early Offense

#3 has the option to look for #1 cutting over the top of #4's back screen or he can take the ball off the ball screen from the trailing #5 man.

#3 comes off the ball screen and looks to score, drive and kick to #2 in the right corner or look for #5 rolling to the basket.