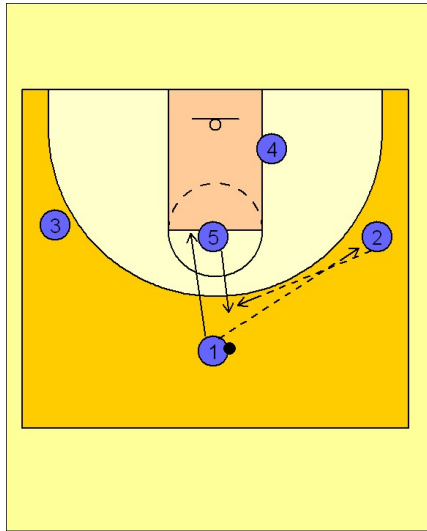


Pittsburgh

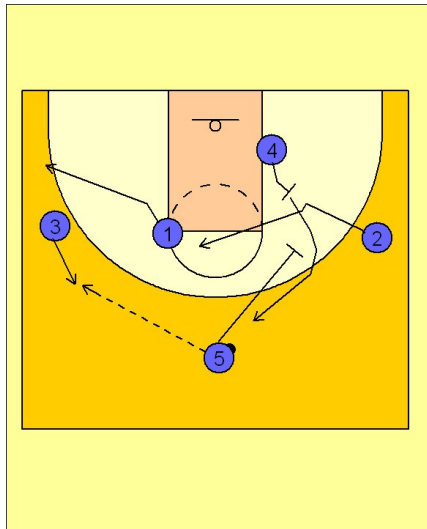
Half court offense (1)



Pittsburgh Half Court Offense vs. Man Defense

#1 enters to #2 on the right wing. #1 cuts into the FT line area while #5 steps out to the top of the key area to receive the pass from #2.

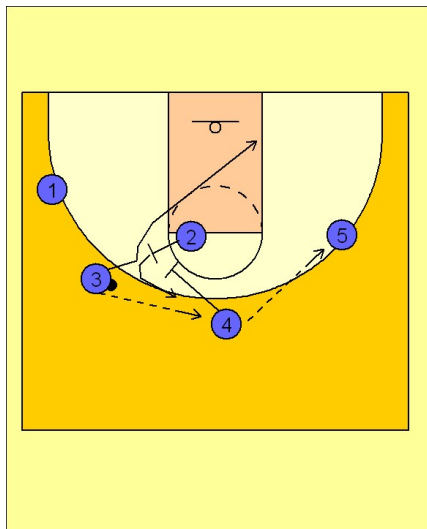
1



Pittsburgh Half Court Offense vs. Man Defense

#1 cuts out to the opposite wing area. #5 reverses the ball to #3. #2 looks to cut through the lane but fakes and cuts to the high post area. #5 after passing to #3, screens away for #4 who has just tried to set a back screen for #2. #4 uses #5's screen to come to the top of the key.

2



Pittsburgh Half Court Offense vs. Man Defense

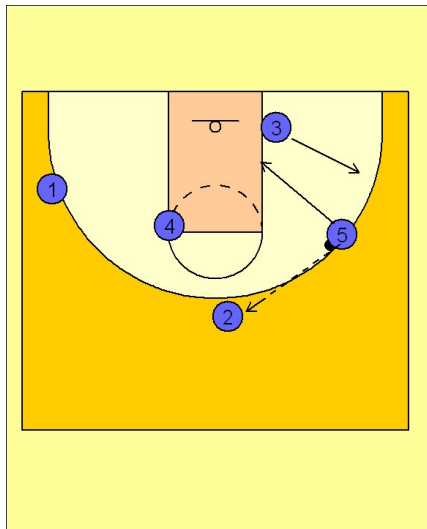
#3 reverses the ball to #4 on top and then cuts through the lane off of #2's back screen. #4 passes to #5 on the right wing and screens away for #2. #2 uses the screen from #4 and comes to the top of the key.

3

Pittsburgh

Half court offense (1)

4



Pittsburgh Half Court Offense vs. Man Defense

#5 hits #2 on top. Usually from here the shot clock has run down and they have to run motion to finish or some quick hitting play to score.