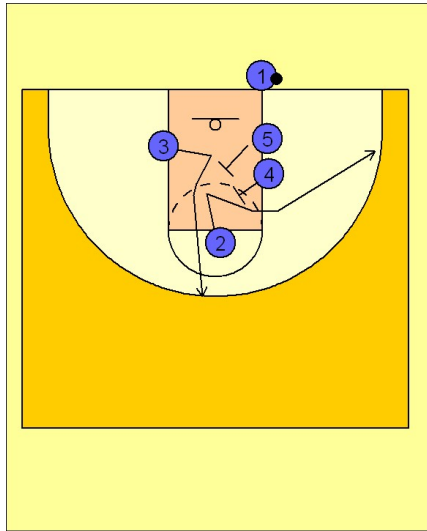


Pittsburgh

Ob under vs. man (1)

1

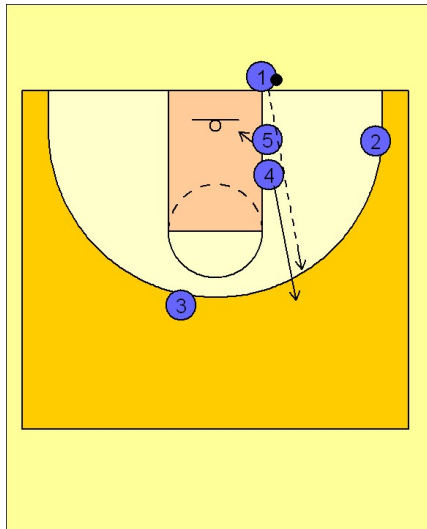


Pittsburgh OB Under vs. Man Defense

#4 and #5 set a double screen for #2 who breaks out to the ball side corner area.

#3 fakes in and then straight out on top.

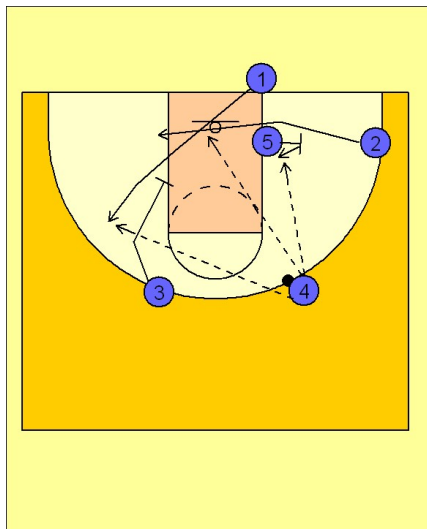
2



Pittsburgh OB Under vs. Man Defense

#4 then pops straight out on top looking for the entry pass from #1. #5 breaks into the lane looking for the quick entry pass down low.

3



Pittsburgh OB Under vs. Man Defense

#1 then steps in and gets a down screen from #3. #2 cuts right after him off of a back screen from #5. #5 steps into the lane after back screening for #2.