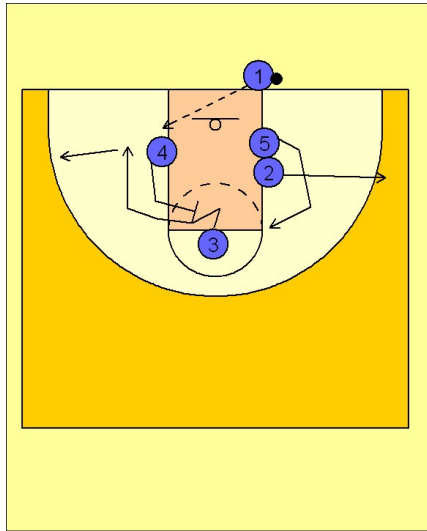


Pittsburgh

Ob under vs. man (2)

1

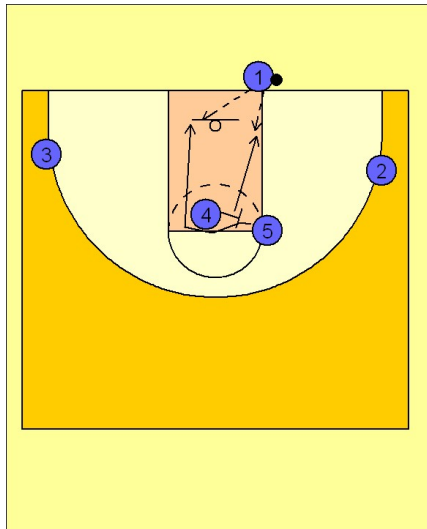


Pittsburgh OB Under vs. Man Defense

#2 breaks to the ball side corner / wing area.

#5 moves up to the elbow. #4 sets a screen for #3 who cuts to the basket and then out to the corner away from the ball.

2



Pittsburgh OB Under vs. Man Defense

#4 then screens for #5 who curls over the top of #4's screen and down the middle looking for the entry pass from #1. #4 rolls back to the low block looking for the ball as well.