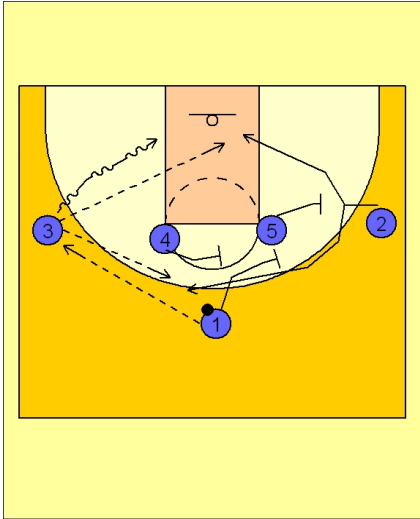




Quick hitter (7)



Pittsburgh Quick Hitter vs. Man Defense

1 - 4 high to begin.

#1 enters to #3 on the left wing.

#5, #1 and #4 set a triple staggered screen for #2 on the right wing.

As this is happening, #3 has the option to attack the cleared out basket area on the dribble drive.

Or, #3 can pass to #2 breaking to the top or under the basket, depending on how they are being defended.