

Pittsburgh

Quick hitter (1)

1

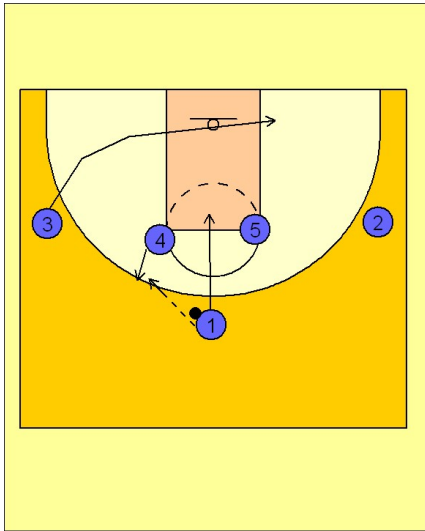
Pittsburgh Quick Hitter vs. Man Defense

1 - 4 high to start.

#4 steps out to receive the entry pass from #1

#3 cuts to the basket and across to the opposite low block.

#1 cuts into the middle of the lane and slows up at the FT line.



2

Pittsburgh Quick Hitter vs. Man Defense

#1 then turns and screens for #5 who curls over the top of #1's screen and cuts to the basket looking for the pass from #4. #1 pops back out to the top after screening.

