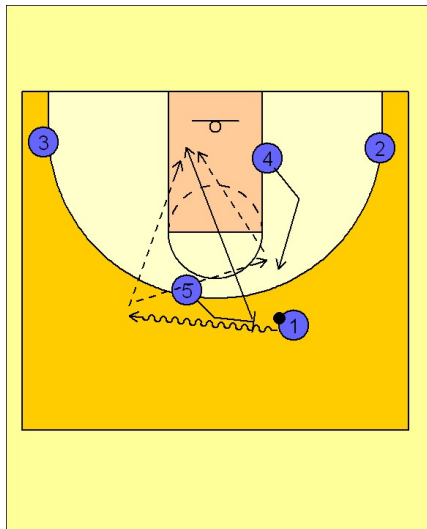


Pittsburgh

Quick hitter (2)

1

Pittsburgh Quick Hitter vs. Man Defense



#5 sets a ball screen for #1. As #1 comes off the screen, #5 rolls to the basket while #4 flashes out from the low block area. If #1 cannot make a direct pass to #5, #1 will pass over to #4 for the high / low entry pass to #5.