

# Pittsburgh

## Quick hitter (3)

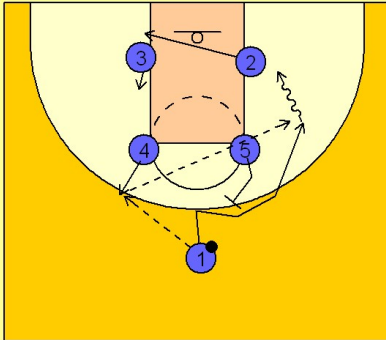
1

Pittsburgh Quick Hitter vs. Man Defense

Box set to begin.

#4 steps out and receives the entry pass from #1. #2 clears out to the ball side low block just under #3, who moves up a bit in the lane.

#5 then moves up and sets a back screen for #1 to fade to the back side for the skip pass from #4. If he is open he will look to catch and attack the basket area cleared out by #2.



2

Pittsburgh Quick Hitter vs. Man Defense

If #1 doesn't receive the ball, #2 breaks out to the ball side wing and #5 turns around and screens down for #1 trying to free him for a jumper on the right side. #4 may also look to drive the lane if the opportunity presents itself.

