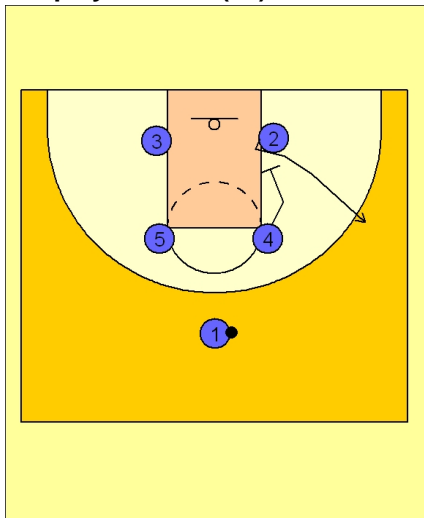




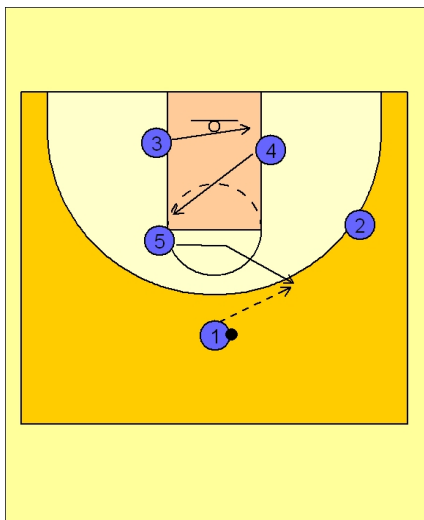
Set play vs. man (14)



Pittsburgh Set Play vs. Man Defense

Box set to begin.

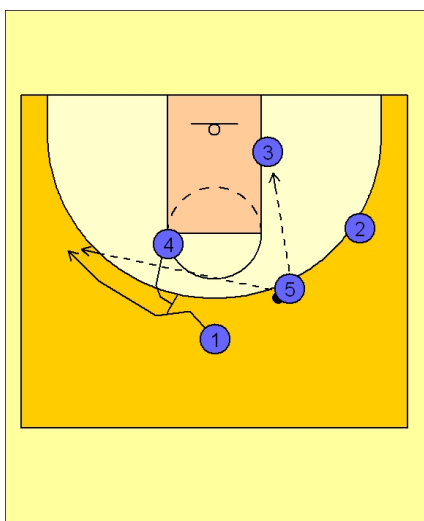
#4 starts play with a down screen for #2. #2 breaks out to the right wing.



Pittsburgh Set Play vs. Man Defense

As #2 reaches the wing, #5 steps out to receive the entry pass from #1.

#4 breaks up to the left elbow where #5 just vacated. #3 slides over to replace the spot #4 just left.



Pittsburgh Set Play vs. Man Defense

As #1 passed to #5, #4 sets a back screen for #1.

#1 fades to the left wing and looks for the over the top pass from #5.

#3 is now isolated inside for the high / low entry pass from #5.