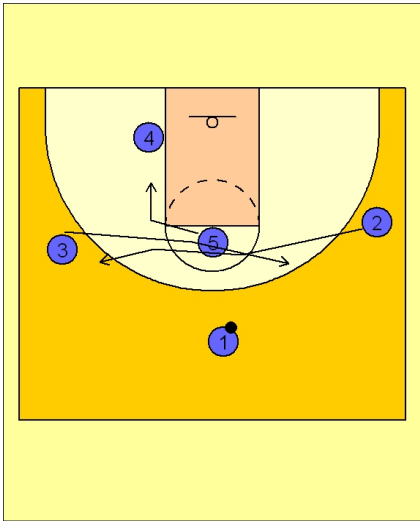


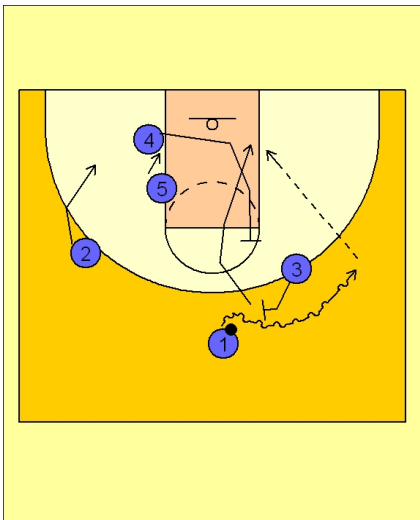


## Set play vs. man (16)



### Pittsburgh Set Play vs. Man Defense

#2 and #3 exchange spots. #5 moves down to the left low block where #4 is located.

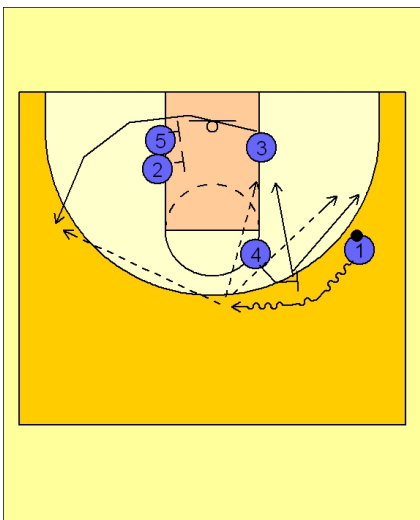


### Pittsburgh Set Play vs. Man Defense

#3 turns and moves up to set a ball screen for #1.

As #1 comes off the ball screen, #4 moves up the lane and sets a back screen for #3. #3 cuts down the lane looking for the pass from #1.

#5 and #2 are now setting up a double screen on the left low block area.



### Pittsburgh Set Play vs. Man Defense

If #3 does not receive the ball, #4 steps out after back screening and sets another ball screen for #1 in the other direction.

As #1 comes off the ball screen, #3 cuts around the double screen from #5 and #2.

#4 either rolls to the basket or pops out to the right wing if he has the range.