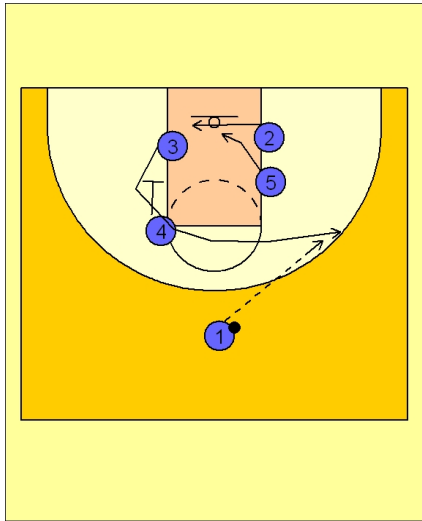




Set play vs. man (17)



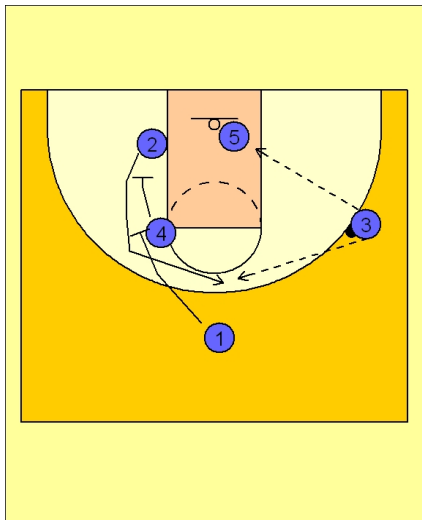
Pittsburgh Set Play vs. Man Defense

Play starts with #4 setting a down screen for #3 on the left low block.

As #3 comes up off the down screen, he break across the free throw line area to receive the entry pass from #1 on the right wing.

At the same time, #2 is moving across the lane to replace #3 while #5 follows behind #2.

As #3 catches the ball, #5 turns back and seals his defender in the lane and looks for a good post entry pass from #3.



Pittsburgh Set Play vs. Man Defense

As #3 catches the ball, #5 turns back and seals his defender in the lane and looks for a good post entry pass from #3.

While this post action is taking place, #4 and #1 are setting a double staggered down screen for #2, trying to free him for an open jumper on top. This screening action will take away the helpside defenders in the lane with #5.