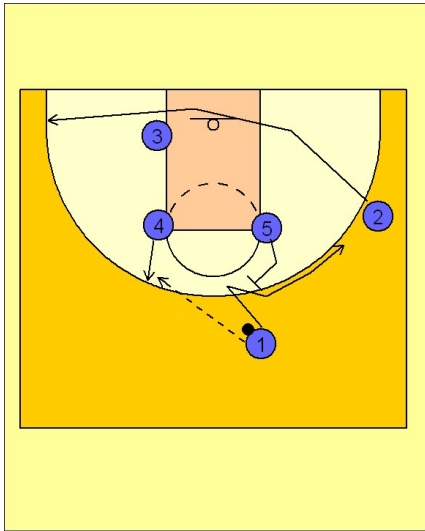


# Pittsburgh

## Set play vs. man (1)

1



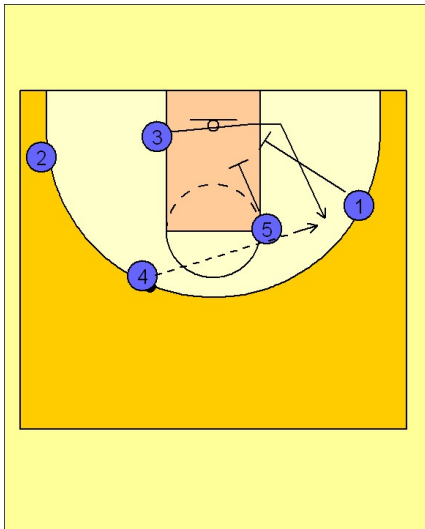
Pittsburgh Set Play vs. Man Defense

#4 steps out to receive the entry pass from #1.

#2 cuts away out to the opposite corner area.

#5 steps out as #4 is stepping out. #5 will set the back screen for #1 to fade to the back side for the skip pass from #4.

2



Pittsburgh Set Play vs. Man Defense

If #1 is not open for the shot, #1 and #5 double screen down for #3 coming out to the right side for the jump shot.