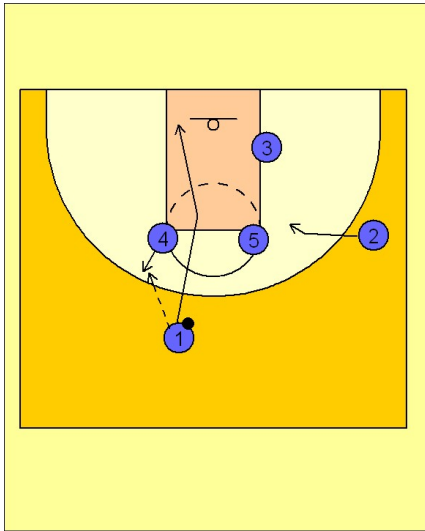


Pittsburgh

Set play vs. man (2)

1

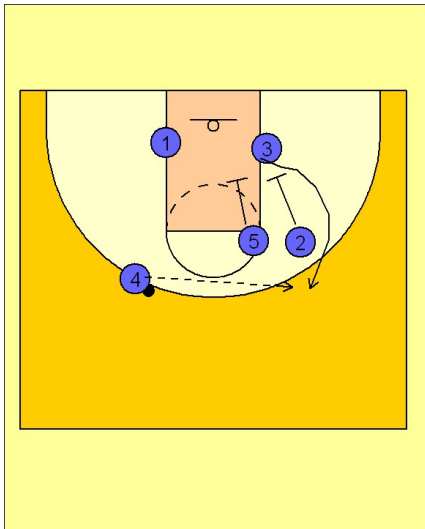


Pittsburgh Set Play vs. Man Defense

#4 steps out and receives the entry pass from #1. #1 cuts through and down to the ball side low block.

#2 moves in next to #5.

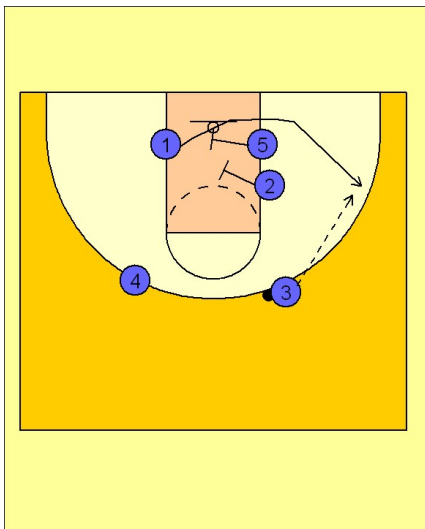
2



Pittsburgh Set Play vs. Man Defense

#5 and #2 move down and set a double down screen for #3. #4 looks to hit #3 coming off the double screen for the open jumper on the right side.

3



Pittsburgh Set Play vs. Man Defense

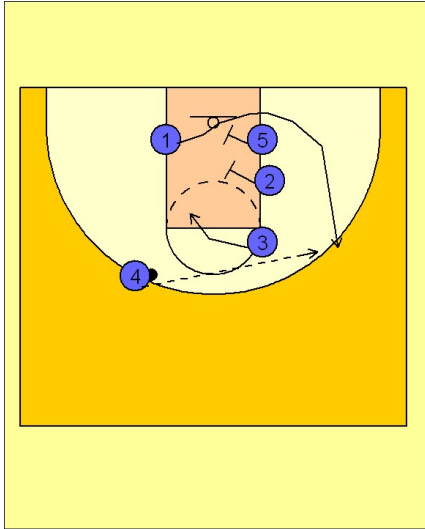
If #3 does not have a shot, #2 and #5 will move across and set another double screen for #1 breaking out to the ball side wing area for the open jumper.

Pittsburgh

Set play vs. man (2)

4

Pittsburgh Set Play vs. Man Defense



If #3 doesn't get the ball on the initial double screen from #2 and #5, #3 will curl around and out while #2 and #5 screen for #1. #4 will then look for #1 as the last option.