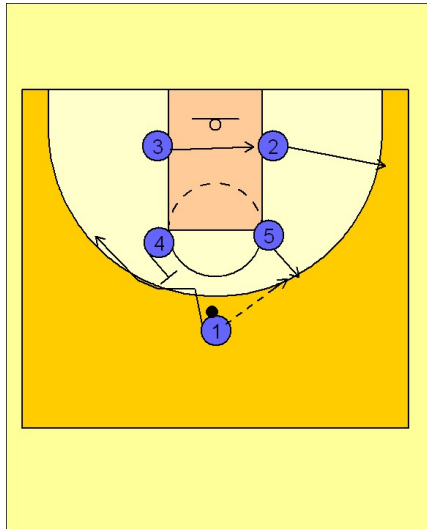


Pittsburgh

Set play vs. man (3)

1



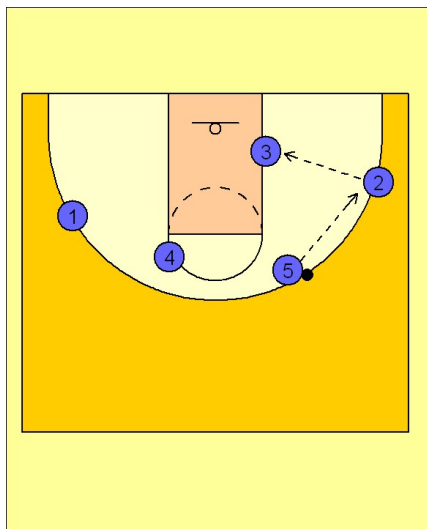
Pittsburgh Set Play vs. Man Defense

Box set to begin.

#5 steps out and receives the entry pass from #1. #4 steps out and sets a back screen for #1 to fade to the back side of the court.

#2 breaks out to the ball side wing and #3 moves over and looks for post position on the ball side block.

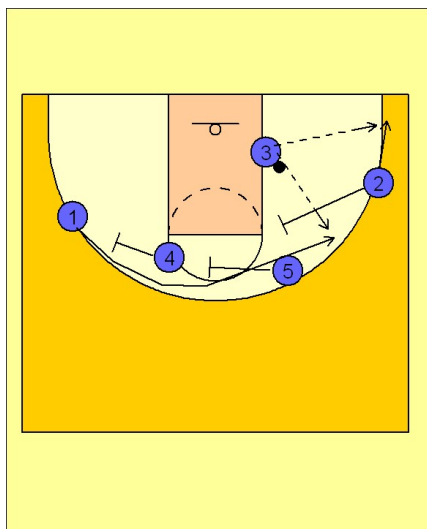
2



Pittsburgh Set Play vs. Man Defense

Xavier and now Pittsburgh are only two of the teams we have seen so far that set up scoring opportunities and screens off the post entry pass. Here #2 gets the ball from #5 and then looks inside to #3 on the low block.

3



Pittsburgh Set Play vs. Man Defense

Once #3 has it on the low block, scoring is certainly an option, but Pittsburgh is looking also for some nice screening action on the perimeter once the ball touches #3's hands in the post. #4 and #5 screen away for #1 on the perimeter. #2 may join them in the screen or he may fade to the corner for a kick out pass from #3. #3 is certainly looking to hit #1 coming off the double or triple screen if he is open.