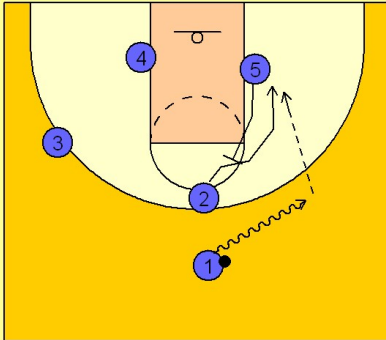


Pittsburgh

Set play vs. man (5)

1

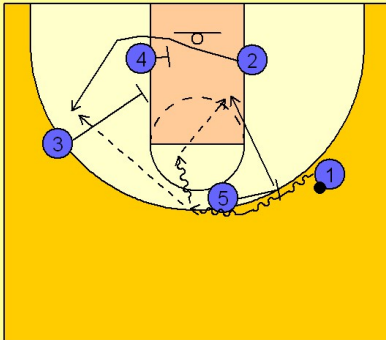
Pittsburgh Set Play vs. Man Defense



#1 takes the ball on the dribble to the right side of the floor. As this happens, #5 steps out and sets a back screen for #2 bringing him to the low block. #1 can give him the ball if he is open coming off the screen.

2

Pittsburgh Set Play vs. Man Defense



If #2 is not open, #5 will then move over to set a ball screen for #1. As #1 comes off the ball screen, #2 is coming off a double screen on the back side of the floor. #1 can look to hit #2 for the open jumper or he can hit #5 who has rolled to the open area created by #2 leaving.