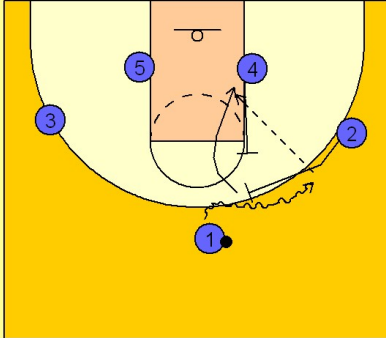


# Pittsburgh

## Set play vs. man (8)

1

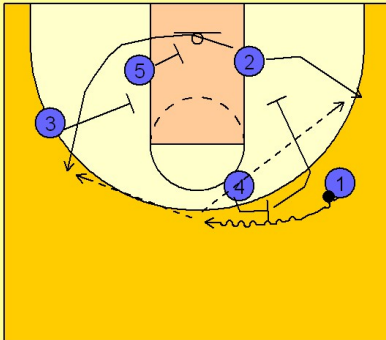
### Pittsburgh Set Play vs. Man Defense



#2 moves in and sets a ball screen for #1 who drives the ball to the right wing area. After screening for #1, #2 gets a back screen for #4 who cuts to the ball side low block looking for the quick hitting entry pass from #1. Not there main option, however.

2

### Pittsburgh Set Play vs. Man Defense



Once #2 gets down to the block he floats into the middle of the lane while #1 now comes off a ball screen from #4 toward the middle of the floor. #4 rolls down to the block after ball screening and now #2 has the option to come out the left side off a double staggered screen from #5 and #3 or out to the right wing off a single screen from #4.