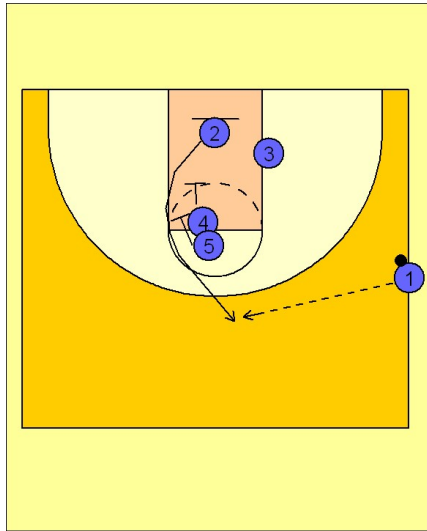


Pittsburgh

Side out vs. man (1)

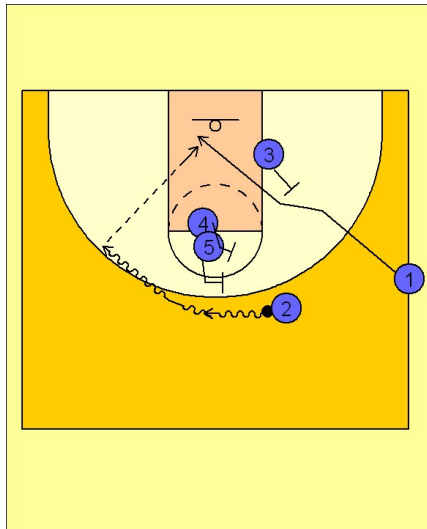


Pittsburgh Side Out vs. Man Defense

#4 and #5 set a staggered double screen for #2 coming straight up for the entry pass at the top of the key.

#1 enters to #2.

1

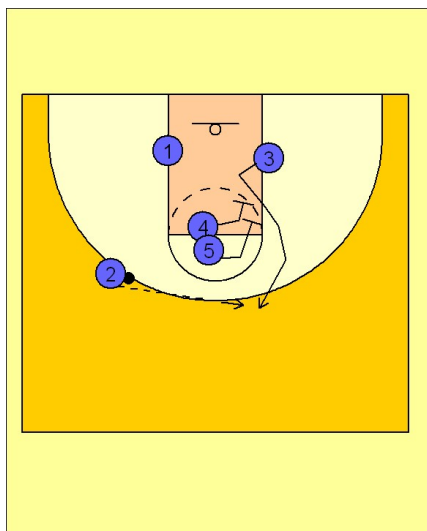


Pittsburgh Side Out vs. Man Defense

Once #2 gets the ball he dribbles to the left side of the floor using a double screen from #4 and #5. #2 is looking for #1 stepping in bounds and cutting to the ball side low block off the back screen from #3.

#2 will hit #1 if he is open.

2



Pittsburgh Side Out vs. Man Defense

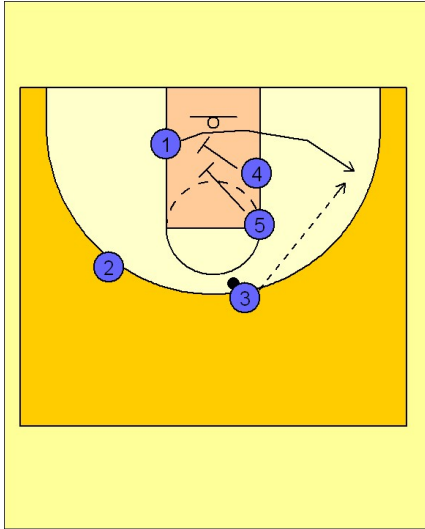
If #1 is not open, #4 and #5 will double screen for #3 coming up to the top.

3

Pittsburgh

Side out vs. man (1)

4



Pittsburgh Side Out vs. Man Defense

If #3 does not have a shot, #4 and #5 will continue screening across for #1 who will try to get open in the corner / wing area on the right side of the floor.