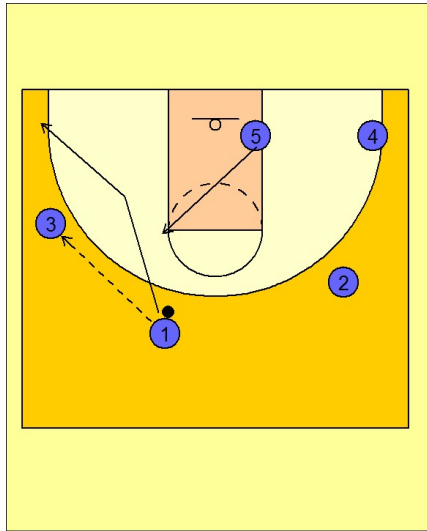


Princeton georg

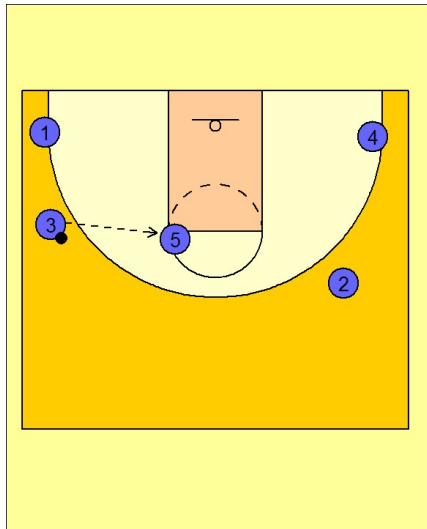
Set play vs. man (1)



Georgetown Set Play

#1 enters to #3 on the left wing and cuts to the ball side corner area. #5 flashes to the high post ball side elbow area.

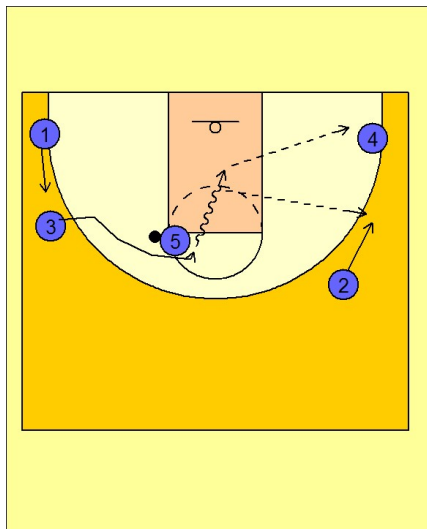
1



Georgetown Set Play

#3 enters the ball to #5 at the free throw line elbow.

2



Georgetown Set Play

After passing to #5, #3 sets his man up by taking him down a few steps and then cuts hard over the top of #5 looking for the hand-off. If #3 receives the ball he will attack the basket and look to score or drive and kick out to #4 or #2.

3

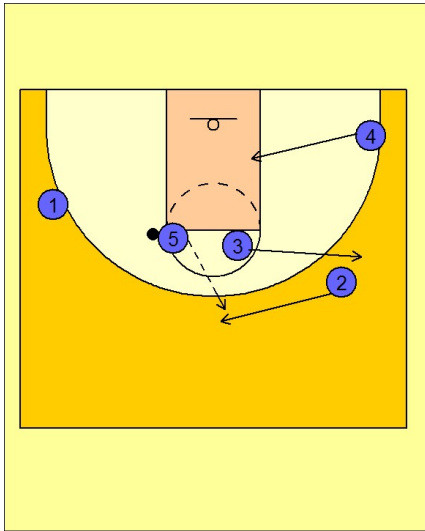
Princeton georg

Set play vs. man (1)

4

Georgetown Set Play

If #3 does not get the hand-off, #2 will fill on top and receive the pas from #5. #3 will cut out to the perimeter and #4 will post up on the block.



5

Georgetown Set Play

From here Georgetown will continue their passing and cutting movement on the perimeter, usually initiated from here with a ball screen from #5 on top.

