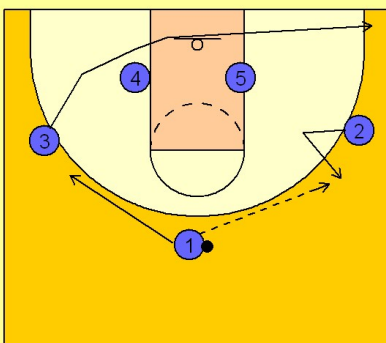


# Stanford

## Set play vs. man (11)

1

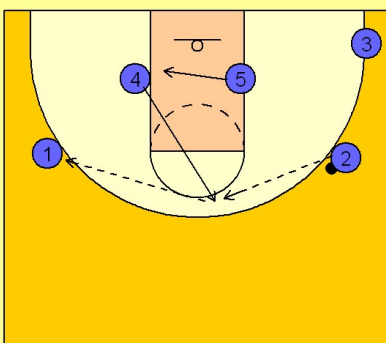
### Stanford Set Play vs. Man Defense



#1 passes to #2 on the right wing. #3 cuts through to the ball side corner. #1 cuts to the back side of the floor.

2

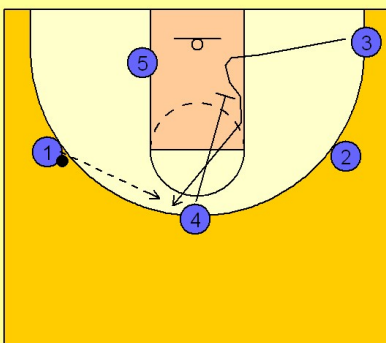
### Stanford Set Play vs. Man Defense



Once #2 has the ball, #4 flashes to the high post area looking for a pass from #2. #2 passes to #4 on top while #5 cuts across the lane. #4 then reverses the ball to #1 on the left wing.

3

### Stanford Set Play vs. Man Defense



After #4 passes to #1, he cuts down and sets a screen for #3 who has moved into the lane to set his man up off the down screen from #4. #3 breaks to the top of the key area to receive the pass from #1.

# Stanford

## Set play vs. man (11)

4

### Stanford Set Play vs. Man Defense

Once #3 has it, #4 and #5 duck in for post position. #3 can dump it into the post or he can look to create on the dribble for the shot or the kick out to either #2 or #3.

