

Stanford

Quick hitter (1)

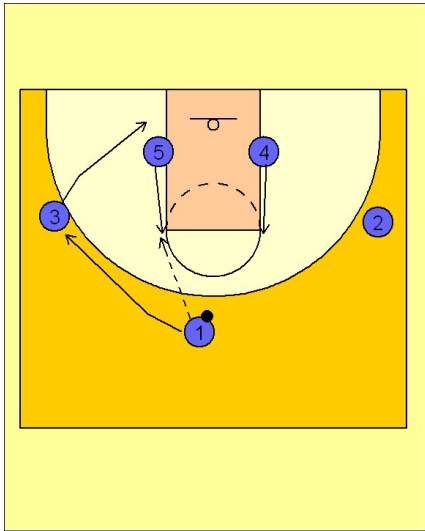
1

Stanford Quick Hitter vs. Man Defense

Stanford does a good job of having many plays that look similar but run different options off of each set. Makes it difficult to determine what is coming....harder to defend and certainly just as difficult to scout.

Here we see Stanford in one of their usual 1-4 high sets with the posts flashing into the high posts.

#1 hits #5 and they look like they are going for the quick back door to #3. #1 clears out as he usually does.



2

Stanford Quick Hitter vs. Man Defense

Instead of #5 looking for the back door, he looks to drive off the backside of #4, who is cutting to the ball side block. #3 cut to the basket and then popped out to the wing, creating a nice driving angle and lane for #5.

If #5 doesn't have a shot, he could look to kick it out to the spotting up #2 man.

