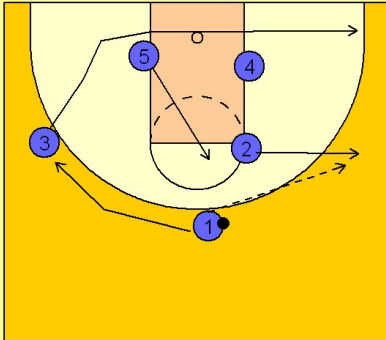


Stanford

Quick hitter (3)

1

Stanford Quick Hitter vs. Man

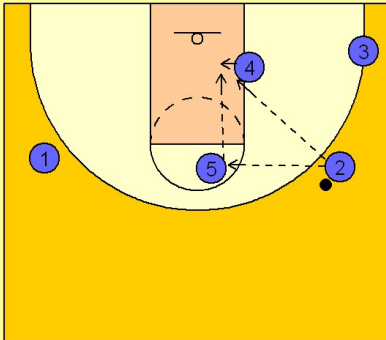


#2 breaks out to the wing for the entry pass from #1. #3 clears out to the ball side corner. After passing to #2, #1 fades to the back side wing, replacing #3 who has just left.

#5 flashes into the high post.

2

Stanford Quick Hitter vs. Man



Stanford has quickly set up and overload on the right side, vacating all back side defenders. From here they will look to lob straight over the top to #4 or look to go high low with a pass into #5 and then into #4 ducking into the lane.