

Stanford

Set play vs. man (1)

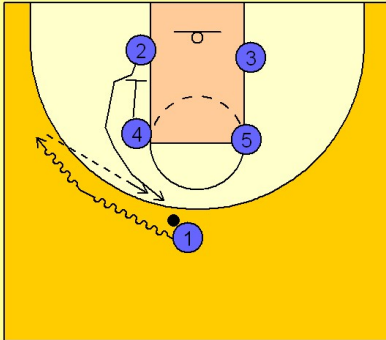
1

Stanford Set Play vs. Man Defense

Box set to begin.

#1 drives the ball to the left or right side, same options in either direction.

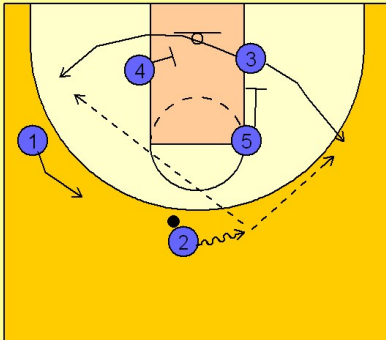
While #1 is dribbling the ball over, #4 sets a down screen for #2, who breaks out to the top of the key area. #1 hits #2 with the pass.



2

Stanford Set Play vs. Man Defense

Once #2 has the ball he takes the ball on the dribble to his right looking for #3 who has the option to come off ball side from the down screen from #5 or away from the ball off of #4's screen. If he is open, he will receive the pass for the shot. #1 slides up as #2 takes the ball over.



3

Stanford Set Play vs. Man Defense

If #3 goes out the back side, #2 continues to take the ball over on the dribble looking to post up #5 on the block. #4 can flash high looking for the high low entry pass.

