

Stanford

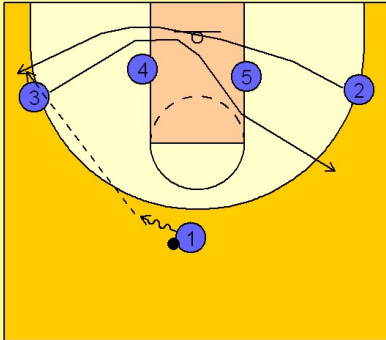
Set play vs. man (10)

1

Stanford Set Play vs. Man Defense

Stanford executes the high / low entry pass into the post as well as anyone. Here is how they usually get into it.

#3 and #2 cross out underneath. #1 enters the ball to either wing. In this diagram he takes it to the left side and passes to #2.



2

Stanford Set Play vs. Man Defense

Once #2 has the ball, #5 fakes in and up to the FT line elbow area. As he catches, #4 is ducking in the post if he is being played behind or he will try and push his man up the lane looking for the pass over the top if he is being fronted.

