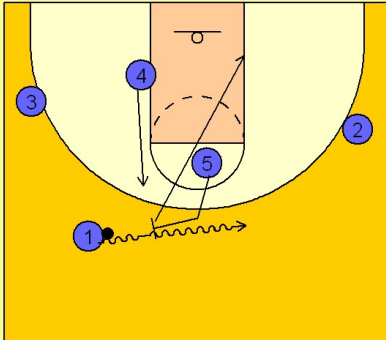


Stanford

Set play vs. man (12)

1

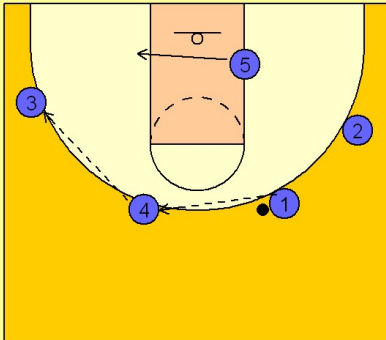
Stanford Set Play vs. Man Defense



#5 steps out and sets a ball screen for #1. As #1 takes the ball off the screen, #4 flashes into the area #1 just vacated. #5 rolls to the low block on the ball side of the floor.

2

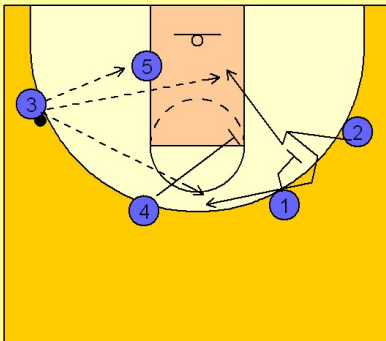
Stanford Set Play vs. Man Defense



If #5 isn't open rolling to the basket, #1 will turn and pass the ball back to #4 on top. #4 will pass to #3 on the left wing while #5 follows the ball across the lane.

3

Stanford Set Play vs. Man Defense



#3 will look inside to the isolated post man #5.

If he is not open, #4 and #1 are screening away for #2. #2 can fake low and come off high over the screen or fake high and cut low to the basket for the layup.

Should #5 get the ball in the post, you can continue to screen away on the perimeter for #2 with #3, #4 and #1. #5 can kick it out if he is not open. Stanford didn't do this on this particular play, but it is a great option to add anyway should the post player not have a good shot opportunity on the low block.