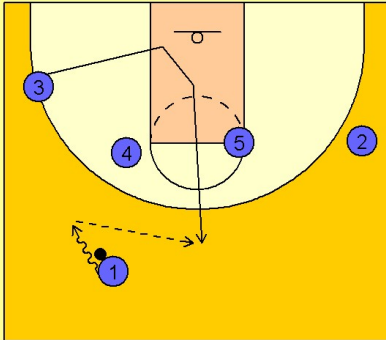


Stanford

Set play vs. man (13)

1

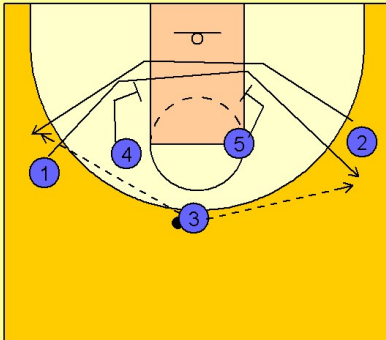
Stanford Set Play vs. Man Defense



#1 takes the ball to the left side of the floor while #3 cuts down and up the middle of the lane. #1 passes to #3 on top.

2

Stanford Set Play vs. Man Defense



Once #3 has the ball, #2 and #1 cross out in the lane coming off of down screens from #5 and #4. #3 looks to hit the open wing player for a shot.

If they are not open, #2 or #3 will look to get the ball inside to either #4 or #5 posting up.