

# Stanford

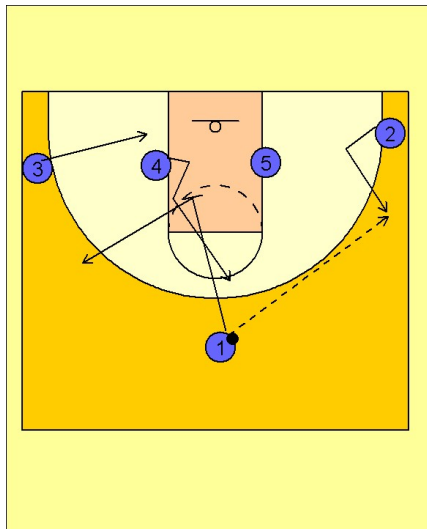
## Set play vs. man (15)

1

Stanford Set Play vs. Man Defense

A 1 - 4 low set to begin.

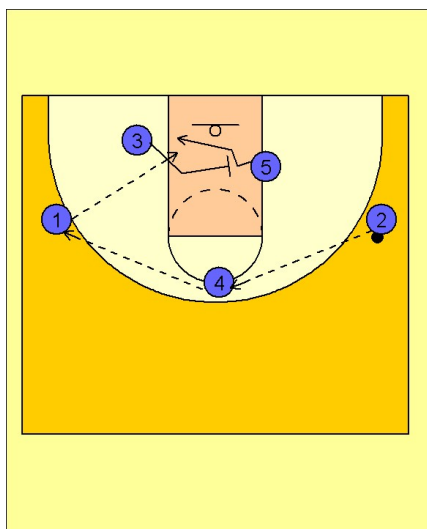
#2 v-cuts to get open and receive the entry pass on the right wing area. #1 passes to #2 and then cuts down in the lane and sets a screen for #4, bringing him to the top of the key area. #1, after down screening, will pop out to the left wing. As this down screen action is taking place, #3 is moving down to the left low block area.



2

Stanford Set Play vs. Man Defense

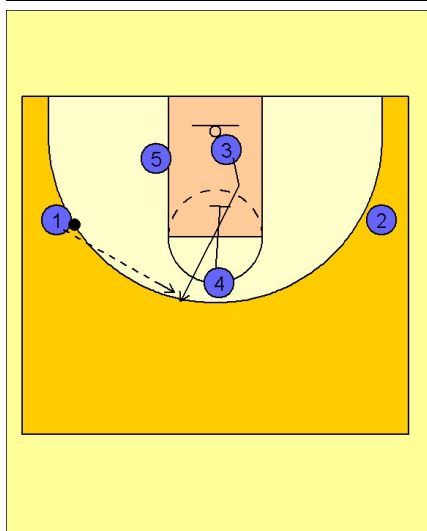
#2 will then reverse the ball to #4 on top who will pass to #1 on the left wing. As #1 is receiving the ball, #3 is screening across in the lane for #5. #3 will look to feed #5 on the left low block.



3

Stanford Set Play vs. Man Defense

If #5 does not receive the ball, #4 will set a down screen in the lane for #3, trying to free him for an open jumper on top.

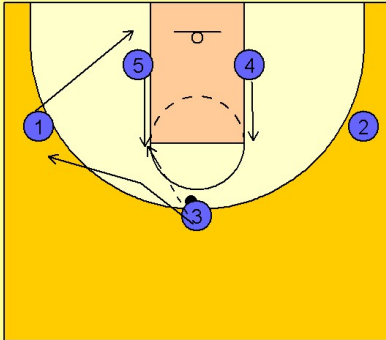


# Stanford

## Set play vs. man (15)

4

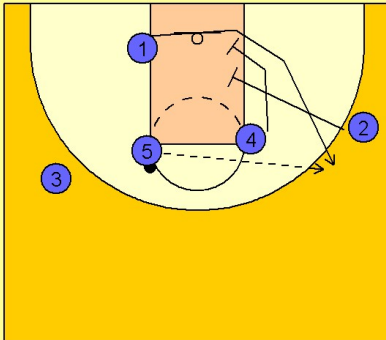
### Stanford Set Play vs. Man Defense



If #3 does not have a shot, #4 and #5 flash to the high post. #3 enters to either post while the wing player, #1, cuts back door and #3 fills the area #1 just vacated.

5

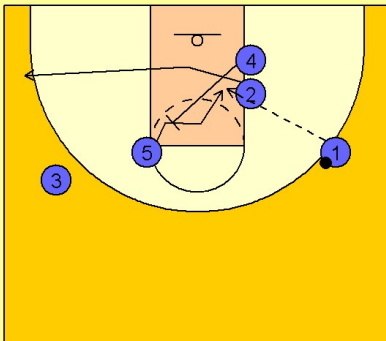
### Stanford Set Play vs. Man Defense



If #1 is not open on the initial backdoor cut, #4 and #2 are setting up a double screen on the right low block area for #1. #5 will look to hit #1 coming off the double screen for the open jumper on the right wing.

6

### Stanford Set Play vs. Man Defense



If #1 does not take the shot, #2 clears out and #4 sets a diagonal back screen for #5 trying to get him open on the right low block for the post feed from #1.